



DISCOVER GOLDEN HORIZONS

WESTERN AUSTRALIA

Bindoon • Calingiri • Dalwallinu • Moora • New Norcia • Wongan Hills





Enjoy a picturesque drive to the fringe of Perth where you enter the perfect example of Western Australia's wheatbelt and immerse yourself in the rural lifestyle of the Golden Horizons.

The rolling and vast landscape is dotted with quintessential Western Australian country towns offering locally made produce, intricate hand made arts and crafts and genuine country hospitality.

From the gentle hills and dales of Chittering Valley less than one hour's drive from Perth, through the romantically named Victoria Plains and the fascinating monastic town of New Norcia. On through the hills and reserves of Wongan-Ballidu, to the history and charm of Moora and the natural wonders of Dalwallinu all combining to make up the Golden Horizons which is sure to captivate you with its astounding history and changing scenery. For the day-traveller, weekender or holiday-maker, the diverse nature of this spectacular and vital region is bound to hold your interest.

Three distinct and intertwined drive trails have been established for the gentle explorer, looking to discover new and special adventures in each community. Each trail meanders through the five different towns, revealing fascinating changes in landscape, land-use, architecture and nature's magnificent 'gardens.'

Direct connections to the very origins of Western Australia's European settlement can be found in the towns - historic buildings, churches, museums and art galleries.

Nature's hand is exhibited along each trail where the horizons are a tapestry of paddocks - some for stock grazing and crops, others for citrus trees - and of native bushland, occasionally dotted with the colours of local stone which have been used in buildings old and new.

Across the seasons you will see oceans of wildflowers, the most prolific in the world, as well as billabongs and creeks co-exist with the eternal presence of kangaroos, eagles, emus and echidnas that inhabit the beautiful bushlands and granite outcrops. In September the contrast of the brilliant yellow canola crops and the lush green of the wheat fields and rolling hills showcase the landscape to perfection and make it plain to see why Australia is the land of green and gold.

Woven into the massive space and timelessness of the country trails is the quiet hospitality and ingenuity of the people calling this place home.

Whether you're looking for an easy escape from the maddening crowd for a short or long time, out exploring the spectacular wildflower season or ready for a complete "tree-change," the fascinating history, beautiful rural landscape and sensational foods make now the perfect time to see, taste and Discover Golden Horizons.

We hope this brochure will inspire you to venture into the Central Midlands.

For more specific information and accommodation options phone the Shire Visitor Centres or log-on to the websites listed on the back cover.



Photo (Top): Sea of everlastings along the rabbit proof fence, Shire of Dalwallinu

Photo (Right): Gathercole Nature Reserve, Shire of Wongan-Ballidu

Bindoon *Shire of Chittering*

The Chittering Valley forms a picturesque gateway into the Central Midlands with rolling hills, wildflowers in season, walking trails and picnic spots.

The town of Bindoon is where you can buy citrus fruit from roadside stalls and is the centre of citrus growing in Western Australia. Home to a famous bakery, the beautiful stone Holy Trinity Church and the Catholic Agricultural College. Agriculture in the area varies from traditional cattle, sheep and goat farming to wineries, citrus, olives, honey, dried fruits and cultivated native flora. A museum showcases the history of the area.

The annual Wildflower Festival is held over four days in September, has hundreds of specimens on display and guided wildflower walks each day.

For the day-traveller, weekender or holiday-maker, the diverse nature of this spectacular and vital region is bound to hold your interest.

Calingiri *Shire of Victoria Plains*

The romantically-named Victoria Plains is home to one of the State's first 'road boards', a number of which were established in 1871 to build and maintain roads and bridges throughout Western Australia. During that period, Victoria Plains defined the land all the way from the Indian Ocean to the South Australian border and from Carnamah in the North, to Bolgart in the South.

New Norcia, the most famous town in the Shire, was founded in 1846 and is home to a community of Benedictine monks who own and operate the town. Olive trees and church bells and 27 magnificent Spanish-style buildings (classified by the National Trust) sit naturally in the bush landscape. The town is so unique it too is registered on the National Estate.

The New Norcia Museum and Art Gallery contains one of the finest collections of moveable heritage in Australia. It houses artworks by Spanish and Italian masters and gifts from the Queen of Spain. A fascinating array of artefacts tell the story of New Norcia's time as an Aboriginal mission, the history of the monks' extensive farming activities and as a place of education and culture.



Dalwallinu *Shire of Dalwallinu*

Dalwallinu has for many years been known as 'The Wheat Shire' and more recently has also been known as 'The Gateway to the World of the Wattles'. Within 100kms of Dalwallinu is the largest density of Wattle (Acacia) species to be found anywhere in the world. The wattle flowers most of the year but reaches its maximum bloom during the months of August and September. Visit www.worldwidewattle.com for more information.

In the second week of September each year the Shire of Dalwallinu celebrates the season with the Wattle Week Festival, the annual Wubin Wildflower Show and a biennial Art and Craft Show. Thousands of wildflower enthusiasts make the journey to the region at this time of the year to enjoy the beautiful wildflowers, including the unusual and eagerly sought after Wreath Leschenaultia. In addition there are many rock formations where delicate native orchids can be found.

Guides to self drive, walking and wildflower trails are available from the Shire Office and Dalwallinu Discovery Centre.

Moora *Shire of Moora*

The town is said to have been named after a well, which the Aborigines called "Maura." Also, it resonates with "Moore" River which runs through the township and was named by George Fletcher Moore, in 1836. Moora is home to the historic 'Berkshire Valley' – referred to as the English version of New

Norcia. There, an 1800s English Village has been recreated and includes a homestead, outbuilding, sheds and a hand-built bridge. Servicing centre for the surrounding grain-growing area, Moora is the largest town between Geraldton and Perth and some of its historically interesting features include the Pre-World War I architecture and the World War II army camps.

Also, Moora is a popular stopover for nature lovers following the spectacular wildflower trail or visit the Wildflower Interpretative Centre which displays a variety of wildflowers and information.

Wongan Hills *Shire of Wongan-Ballidu*

Discovering and naming the hills of "Wongan Katta" in 1836, (only seven years after the founding of the Swan River Colony), Surveyor-General John Septimus Roe used an Aboriginal term. Translated, it means "whispering hills" and refers to the beautifully intimate sound of the breeze through the trees and gorges.

Wongan Hills is Australia's first RV-friendly town and Wongan-Ballidu is now the fastest-growing visitor destination in the wheatbelt region. It encompasses 10,000 hectares of pristine, natural vegetation and over 1,400 different varieties of wildflowers. It is a flora hot-spot in Western Australia and the brilliantly interpreted walk trails, plus excellent hospitality, makes it a year-round attraction.

On the edge of town is a 24 hour access airstrip utilised by the Royal Flying Doctor and recreation users.

Ballidu, "a Classic Country Town", thrives on its cultural and artistic reputation with the Contemporary Art Society.

Photo (Top): A kangaroo grazing in a paddock

A Sea of Flowers

View and learn about wildflowers through touch, sight and smell. Most wildflowers are at their best from August to November, however there is something flowering all year round.

Top 9 wildflowers in the region



Everlastings (Rhodanth chlomcehala subsp Rosea)

Commonly Found: All throughout the region in pink, white and yellow blooms.

Flowers: July – November



Wreath Flower – (Leschenaultia macrantha)

Commonly Found: These rare and striking flowers prompt interest from all over the world, with north of Dalwallinu being their most southern flowering point.

Flowers: September - October



WA Christmas Tree (Nuytsia floribunda)

Commonly found: Sandy soil areas predominantly to the western side of the region

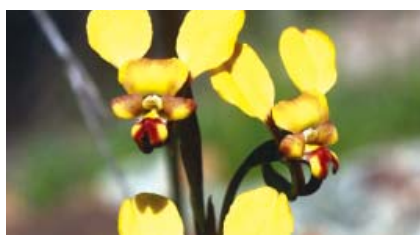
Flowers: November - December



Wattle (Acacia)

Commonly found: Various species flower throughout Golden Horizons with Dalwallinu having the most densely populated area.

Flowers: Can bloom all year round, however peak time is August-September



Donkey Orchids (Diuris)

Commonly found: Donkey orchids are amongst an array of many different varieties that appear throughout the season in most areas, preferring a damp location such as at the base of a rock.

Flowers: August - October



Blue Leschanualtia (Lechenaultia biloba)

Commonly found: this vivid cornflower blue plant is prolific roadside from Victoria Plains through to Chittering.

Flowers: September – October



Red and Green Kangaroo Paws (Anigozanthos manglesii)

Commonly found: Western Australia's floral emblem prefers a sandy soil and can be found in the Shire's of Chittering, Moora and Victoria Plains.

Flowers: August - November



Dampiera (Dampiera diversifolia)

Commonly found: On the road verges and reserves across the region.

Flowers: September - October



Red Flowering Gum (Corymbia Ficfolia)

Commonly found: Can be found throughout the region.

Flowers: January - March

Flowering durations mentioned are all rainfall dependent and will vary with each season

1 Chittering Wildflower Festival:

September. Hundreds of named specimens on display. Guided wildflower walk. Contact the Chittering Visitor Centre for more details closer to the month.

2 Calingiri Wildflower Walk:

September/October. Please contact the Shire of Victoria Plains closer to the date.

3 Rica Ericson Reserve: Open woodland grows over low heath in this nature reserve. The Spider Orchids are particularly good in spring. In early summer look for the unusual Blue-eyed Smokebush and the bright purple pea flowers of *Gompholobium shuttleworthiana*.

4 Moora: Moora is home to over 19 species of Declared Rare Flora (DRF) and is home to one of the only patches of Rose Mallee (*E. Rhodantha*) in the world.

5 Moora Wildflower Drive: Moora stands on the junction of two important and very different botanical districts, where the underlying geology has produced different soil types and so very different plant communities. This drive is designed to show you the different regions and their plants.

6 Western Wildflower Farm and Interpretive Centre: The family-run farm has a unique collection of WA wildflowers. They are grown in the grounds, dried in the sheds and made into novel arrangements for retail and export sales.

7 Dalwallinu Wattles: Visit Dalwallinu during the months of August to September and you can see an abundance of *Acacia* species dripping with golden blossoms. If you are lucky enough to visit during the Wattle Week Festival you may even get to sample the very unique flavour of wattle seed, in some genuine country cooking. For further information check the Shire's website www.dalwallinu.wa.gov.au.

8 Wubin Wildflower Show: Held during the Wattle Week Festival at the Wubin town hall this event showcases a unique display of approximately 200 wildflower specimens. If your visit to the area is brief, this is an excellent opportunity to view different varieties from the district.

9 Jibberding Reserve: Heading north on the Great Northern Highway and just past Rabbit Proof Fence Road is a signposted track that will lead you into one of the best displays of masses of pink, white and yellow everlastings.

10 Reynoldson Reserve: The reserve is famous for a massive garden of *Verticordia*. Seven varieties are found in the height of the November flowering season. For details on the Reynoldson Reserve Festival and trails, contact the Wongan Hills Visitor Centre.



Photo: Splendid White Spider Orchid commonly found throughout the region



Photo: Hakea pandanicaarpa commonly found throughout the region



Getting Back to Nature

Discover the natural environment that is unique to the wheatbelt.

- 1 Peace Be Still:** A picnic and camping area on the banks of the Brockman River provides an opportunity to enjoy the natural bushland setting of the property. Peace be Still also has a Guest House and Retreat Centre. The three Shire walks (Swan, Toodyay and Chittering) have been established from the property. www.peacebestill.com.au
- 2 Julimar Lookout:** On the Julimar Road to or from Toodyay, Julimar Lookout is an alluring must-stop site. The viewer becomes absorbed and mesmerised by the intricacies of the beautiful panorama.
- 3 Blackboy Ridge:** This 684 hectare reserve, located on Chittering Road, is rich in wildflowers and an open Wandoo and Marri woodland offers spectacular views across the Brockman River flats. Pristine walks around, up and over the winter creeks make the tree-clad hideaway a special place for young and old.

Confirmed sightings of over 60 different bird species including Carnaby's Cockatoos, Splendid Fairy Wrens, Thornbills, Honeyeaters and Butcher birds makes this an attractive walk for birdlovers.
- 4 Spoonbill Lake, Bindoon:** A 9 hectare reserve with a precious resource of fresh water. The reserve is home to Ducks, Grebes, Swans, Clamorous Reed Warblers, Coots, Hens, Waders, Dabchicks and many more. Spot the bird life gathering around the creek-fed lake.
- 5 Salmon Gums:** Moora was once the site of a large Salmon Gum forest with several stands of these beautiful trees still remaining. The north and south entry points to Moora are natural Salmon Gum drives.
- 6 Carnaby Cockatoo Walk Trail:** This interpretive walk trail meanders along the Moore River bank through Moora for 3.5kms one way. View endangered Carnaby's Cockatoos in their natural habitat.
- 7 Watheroo National Park and Jingamia Cave:** Watheroo National Park was created in 1955 and covers 44,473 hectares. The unique vegetation surrounding the cave makes the area even more interesting. The cave is composed of chert (a flint like quartz) within the unsealed rock. There is a picnic area nearby.
- 8 Buntine Rocks:** An invigorating climb up the rocks culminates in magnificent panoramic views just north of Buntine. Barbecue and picnic facilities provide a welcomed respite. Wander through Everlastings, Orchids, Wattles and Melaleucas (in season).

The gnarled trunks of the Kunzea Pulchella growing among granite rocks evoke comparisons with a more ancient landscape.

If you explore further and walk along behind the water pool (as far as the dam), the area abounds in seasonal Orchids, Rainbow plants, Lambs Tails, Honey Dews and other species.
- 9 Petrudor Rocks:** Located on Petrudor Road, a popular picnic destination for both tourists and locals alike, it is a fabulous spot for the favourite childhood activities of clambering over rocks and catching tadpoles.

10 Dingo Rock Fauna Reserve: During Winter and Spring, the reserve is covered in a picturesque array of wildflowers. The large granite rock, once home to many dingos, was a reliable Aboriginal water collection site, complete with 'gnamma' hole. Located off Manmanning Road, east of Wongan Hills.

11 Gathercole Reserve: The weathered, carved, even hollowed out rock boulders are remarkable; not to forget the wide quartz protrusions that form a perfect natural wall. Nature has wrapped the reserve, located east of Wongan Hills, in vegetation unique to granite outcrops.

12 Christmas Rock Walk Trail: Winding through the bushland which hugs the outskirts of the Wongan Hills town, the trail is colourfully interpreted.

13 Reynoldson Reserve: Just north of Wongan Hills, a diversity of flowering plants intermingle along an interpreted, 2km walk and drive trail.

14 Wongan Hills Nature Reserve, Roger's Reserve and Elphin Reserve: These four reserves are ablaze with wildflowers at the height of their season. A short walk to the right spot reveals the unique and fascinating Wongan Cactus.

15 Mount O'Brien: Awesome panoramic views await. The squiggle lines define the edges of salt flats which connect Lake Hinds and Lake Ninan. Enjoy an evening soiree or lunch time barbecue among wildflowers and plant varieties found nowhere else on earth.

16 Mount Matilda: The lofty terrain features rare and endangered flora that botanists from all over the world come to see. Completely lose yourself in the spirituality of the gully. For flora walk and scenic route information contact the Wongan Visitors Centre.

17 Piawaning: Stop at the general store and enjoy the quaintness of this siding town. Then go for a wander, 1km in any direction and take in the seasonal displays of flora.

18 Camino Salvado Pilgrim Walk Trail: A 160 kilometre pilgrimage from Salvadore Road in Subiaco to St Josephs Church in New Norcia. The walk travels via Bells rapids, Walyunga National Park, through the Chittering Valley, the township of Bindoon and on to New Norcia.



Photo: Mt O'Brien located in the Shire of Wongan-Ballidu

Distance Chart

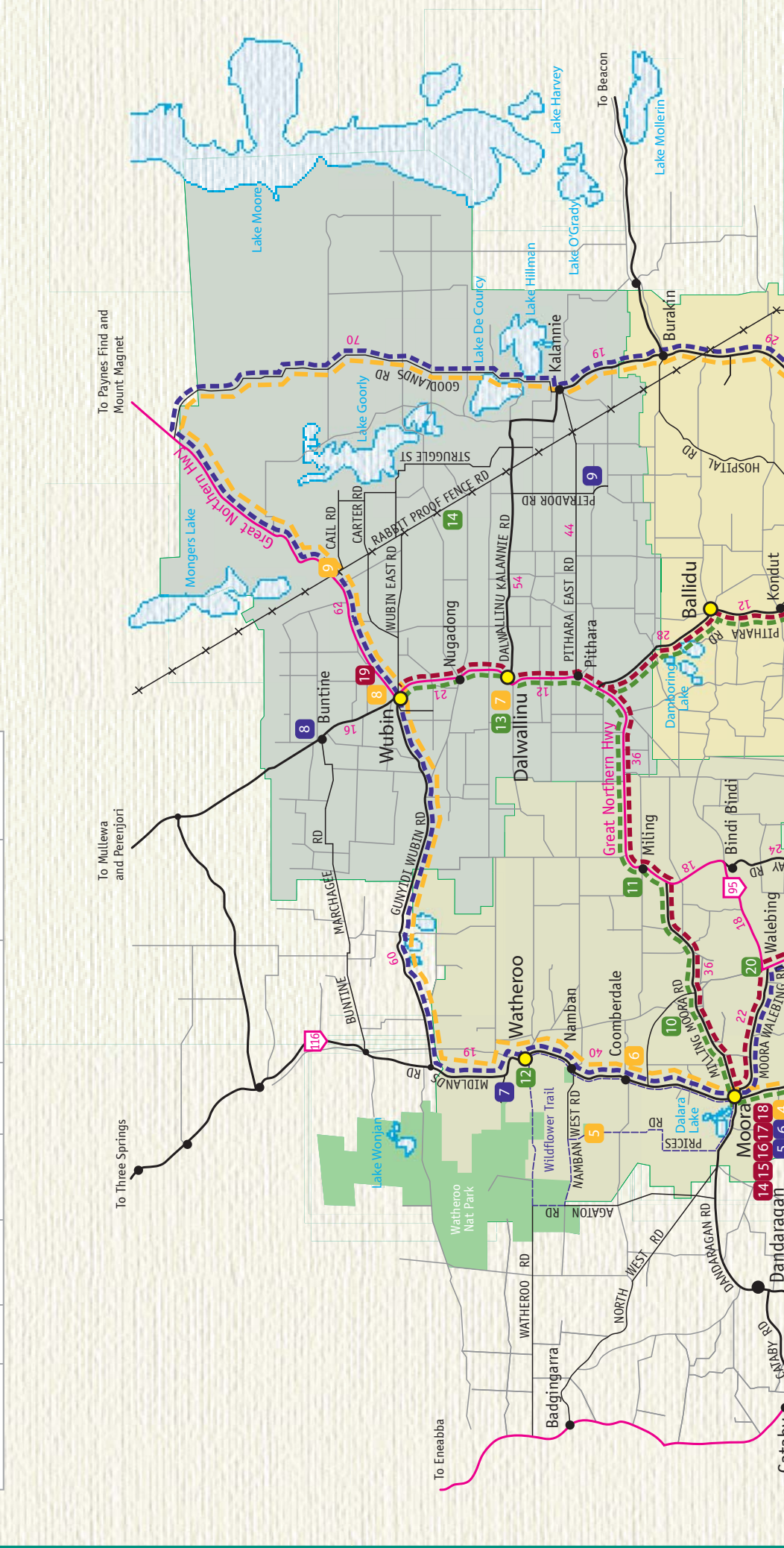
- Distances between towns in kilometres

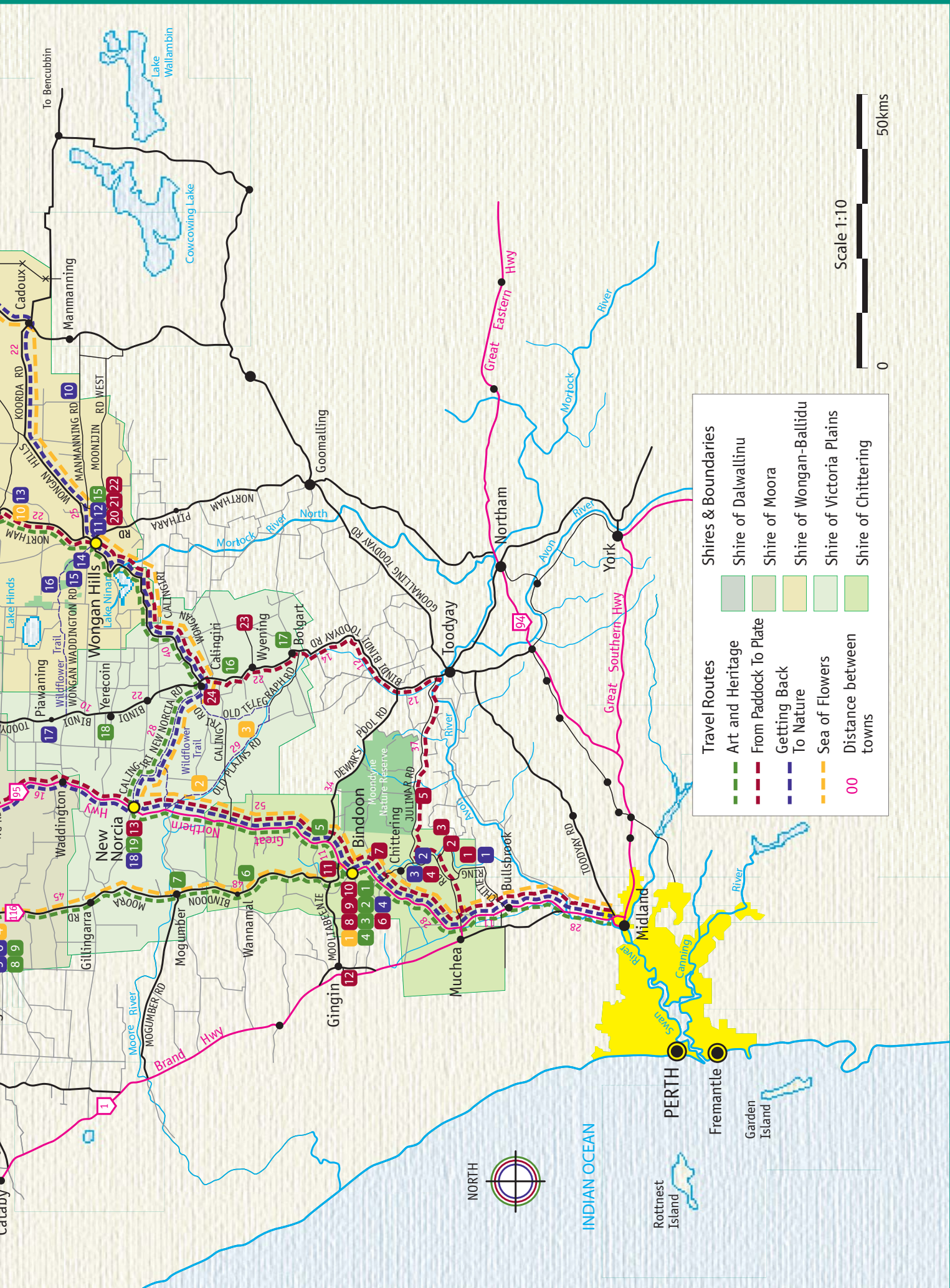
Take a break from driving every 2 hours

	Perth	Bindoon	Calingiri	Moora	Wongan Hills	Dalwallinu	Geraldton
Perth		91	150	184	183	261	431
Bindoon	91		59	93	116	169	371
Calingiri	150	59		82	40	114	361
Moora	184	93	82		88	106	279
Wongan Hills	183	116	40	88		75	367
Dalwallinu	261	169	114	106	75		309
Geraldton	431	371	361	279	367	309	

CENTRAL MIDLANDS

VENTURE INTO NEW HORIZONS





Travel Routes		Shires & Boundaries	
	Art and Heritage		Shire of Dalwallinu
	From Paddock To Plate		Shire of Moora
	Getting Back To Nature		Shire of Wongan-Ballidu
	Sea of Flowers		Shire of Victoria Plains
	Distance between towns		Shire of Chittering



INDIAN OCEAN

PERTH

Fremantle

Rottneest Island

Garden Island

Midland

Mucchea

Gingin

Wannamal

Mogumber

Gillingarra

New Norcia

Waddington

Piawanning

Wongan Hills

Yerocoim

Bindoonya

Wongin

Callangari

Wyening

Bolgart

Toodyay

Northam

York

Goomalling

Mannanning

Cadoux

To Bencubbin



Photo: Harvester emptying grain into the chaser bin.

From Paddock to Plate

Learn about the history of the development of the region and its unique lifestyle while sampling some fresh and tasty produce.

- 1 Golden Grove Citrus Orchard:** Located in the undulating hills of the Chittering Valley the orchard has 13,000 citrus trees. Tastings, sales of fruit and freshly squeezed juice are available. From April to November the converted packing shed is open for Devonshire teas. An enclosed barbecue area is available for group bookings. www.goldengroveorchard.com.au
- 2 Kyotmung Estate:** Enjoy a glass of wine and the beautiful views from the gorgeous verandah. The signature wine is Shiraz, but Shiraz Grenache Port is also extremely popular. Visitors can also sample the extra virgin olive oil and olive oil products. Visit kyotmung.com.au for more details.
- 3 Stringybark Winery and Restaurant:** Toss a coin and choose the winery, restaurant or function centre; or opt for all three. Cellar door sales and fully licensed restaurant are open for tastings and scrumptious meals. www.stringybarkwinery.com.au
- 4 White Dog Farm:** This relaxing adult, rural retreat specialises in romantic getaways or to spend time with friends. Set within 42 acres of native trees and vineyards. Wine and olive oil tasting available at the cellar door. The signature sparkling pale pink bubbly is made in the traditional champagne style. www.whitedogfarm.com.au
- 5 Alicia Estate Winery and Restaurant:** Overlooking Julimar Forest, serves traditional European Cuisine. Wine and Honey Mead available. www.aliciaestatewinery.com.au
- 6 Burroloo Well Farmstay:** Enjoy a picnic overlooking the rush-flanked billabong, set among flooded gums about 300 metres from the farm buildings. While there, check out the farm for hydroponically grown fruit (in season). Accommodation and camping facilities and walks over the farm to observe the emus and birds.
- 7 Apricot Acres Farm:** A family owned and operated, mixed horticultural business. Produced on-site are all the stone fruit varieties and dried grapes and citrus: which are packed in an extensive operation on site. Guided orchard tours (by appointment) relate the horticultural activities and fresh fruit, dried fruit and confectionary are on sale. Ph: (08) 9576 1030
- 8 Bindoon Bakehaus & Cafe:** Set in the scenic location of Chittering Valley, come and experience our extensive range of traditional favourite and gourmet pies, breads, pastries and cakes. We are an award winning bakery famous for our personalised service and our contemporary 'flavoured' cafe. Ph: (08) 9576 0069.
- 9 Bite Café and Restaurant:** On Great Northern Highway, Bindoon. Open for breakfast, lunch and dinner. Tea or coffee with Dutch cake. Ph: (08) 9576 0837.

10 Briery Estate: A variety of award-winning, classic-style wines are produced at the Estate. Relax on the gorgeous old jarrah verandah and try the dinner liqueur "Topaj", made from their new Hungarian grape varieties. Last Sunday of each month 60's and 70's music session.
www.brieryestatewines.com

11 Scottalian Hotel: Extensive menu for lunch or dinner with rural outlook, just north of Bindoon on Great Northern Highway. Ph: (08) 9576 1400.

12 West Coast Honey: Heaven from the hive; even honey icecream is on the menu. Free tastings of the varieties of honey, including honey extraction demonstrations for the curious. Products are on sale along with delectable Devonshire Teas. Ph: (08) 9575 1250.

13 New Norcia Hotel, Bakery and Abbey Ale: Abbey Ale, available at the New Norcia Hotel, is a traditional Monastic ale – golden in colour, blessed with scents of fruit and spice, plus a delicate champagne-like finish, and balanced with just a hint of bitterness. Using a traditional wood-fired oven from 1886 the bakers at the New Norcia bakery bake a range of yeasted breads daily for consumption by the monks and visitors. Also produced is their acclaimed Nut cake, Pan Choccolatti and Almond Biscotti. www.newnorcia.com

14 Kumquot Mae Cafe: Belonging to the Slow Food Movement this café located in Moora offers fresh local produce designed to be enjoyed at leisure.

15 Moore Park Olive Oil: At this traditional wheat and sheep farm, the owners have diversified to produce olive oil and marinated olives. Their olive grove was planted in 1958, ahead of their time in comparison to the majority of olive growers now growing olives. The oil is available to purchase at Purser's Butchers located in Dandaragan Street Moora.

16 Tin Shed Arts: Locally made products and gifts in Roberts Street, Moora.

17 Wheatbelt Gallery: Food, local artwork and coffee in a relaxed setting in the town of Moora.

18 Drovers Inn Hotel Moora: Originally named the Commercial Hotel, this hotel, in Moora, was built in 1909 by Gus Liebe, famous for building the Budapest Opera House and His Majesty's Theatre in Perth. There are hotel and motel rooms available and appetising meals on offer.

19 Wubin Wheatbelt Museum: The Museum records at the wheat bin clearly outline the development of bulk handling as a practice for carting and storing grain - introduced to the world by Western Australian farmers - and traces its impact on social and economic life in the wheatbelt.

20 Wheat Farm visits: Seasonally available, several wheat farms are open for the adventurers, wanting to experience the many activities of cropping, growing and harvesting wheat and other cereal grains; which the area is well-known for in Australian and World commodity markets. (By appointment with the Wongan Hills Visitor Centre).

21 Wongan Bakery: The bakery displays the original bakery oven. Open for morning and afternoon tea and lunch. Enjoy homemade sandwiches, pies, pastries and cakes.

22 Wongan Hotel: The hotel offers traditional meals, beer on tap and charming old style hotel accommodation or modern self-contained motel rooms. Curl up on the couch in front of the fire on a cold night, or enjoy the sunshine out in the hotel beer garden. The restaurant offers an a la carte menu, bistro menu, bar snacks and counter meals.

23 Wyening Mission: The historical farm was established in 1878 by the Benedictine monks and was built to form a cross. The Cellars (1890) still house some of the original wine-making equipment. The winery is open to the public by arrangement and the farm promotes the regional food, history and farming. www.wmfarm.com.au

24 Five Roads Café: Located in the Old Road Board building in Calingiri this unique country café offers homemade food, cakes and 'real' coffee. Open Monday to Friday 8.30am to 2.30pm and Saturday 8.30am to 12.30pm.



Photo: Orchid staff attending citrus at Agrifresh



Art and Heritage

Find that unique 'something' and explore a little of the history of the region

- 1 Brockman Centre, Bindoon Arts and Crafts:** The well-known arts and crafts centre in Bindoon has operated since 1988. The Center is equipped with a ceramics and pottery workshop and jewellery making equipment. The Brockman shop sells handmade, local art and craft items.
- 2 Bindoon Heritage Museum at the Brockman Centre:** Two thousand-plus museum items are on show. Many items relate to the pioneering Glover family, original settlers in Mooliabeenie. The collection of local identities Topy and John Dickerson who had been avid collectors for over 40 years who bequeathed their collection to the community. One of the oldest exhibits on display is the 1928 McCormik Deering petrol/kerosene farm tractor which still runs well and is painted in the original livery of the day.
- 3 Holy Trinity Church – Bindoon:** Work commenced on this historical church in 1886 and was consecrated in 1887. The final building cost was £400 and its history of fund raising and community is an important story of the Chittering Valley heritage. There are 115 graves of many pioneers of the district, with the first burial being in August 1886. Eucharist is held on 2nd and 4th Sundays at 9.30am.
- 4 Sculpture Trail:** A series of five sculptures found around Bindoon. Featuring El Toro, The Birds, The Nest, The Travelling Monk and The Bell. At the southern entrance to Bindoon Joir de vivre. Metal cut outs of Picasso's characters depicting the joy of living in Chittering.
- 5 Bindoon Catholic Agricultural College:** The college farm consists of 3643ha of which 2000ha are cleared with an annual cropping programme around 450ha with wheat, oats, barley being the main crops. It is a secondary co-ed College for day and residential students and specialises in Agriculture, Hospitality, Equine Industry and Auto Workshop. Be impressed by part-Spanish Mission part-Italianite architecture. Visitors are welcome by appointment or contact the Chittering Visitor Centre for more information.
- 6 Wannamal Walk Trail:** A heritage walk trail dedicated to the pioneer men and women who toiled hard to establish farming land in the area and who provided and maintained the necessary public services and amenities. The townsite was gazetted in 1908 and the trail takes in the sites of the school, post office, fettlers hut, Yonkoff's Mound, Gangers house etc. Information available from Chittering Visitor Centre.
- 7 Mogumber Bridge:** One of the highest timber and concrete bridges in WA, standing 12m above the river bed and spanning 82.5m.
- 8 Moora Town Walk:** Features parks, gardens, the Moora Town Clock, public art pieces, heritage buildings from the 1900's including The Drovers Inn, the Court House and churches of Gothic architectural style.
- 9 Moora Military Sites and Tin Soldier:** During World War II, Moora played host to a large number of soldiers. A 'Scrap Iron' soldier stands as a tribute to the brave men and women who represented their country. For more information regarding the army sites collect a brochure from the visitor centre.
- 10 Berkshire Valley, Moora:** Berkshire Valley was founded in 1847 by, a poor Berkshire farm hand, (James Clinch) who attempted to reproduce an English Berkshire farm complex down to the last detail. The buildings were made from adobe, pise, hand made bricks and unworked stone. Berkshire Valley was built over a period of 25 years and contains a homestead (1847), stables (1867), a shearing shed (1869) barn, managers cottage (1856) and a two-arched bridge (1869) which is

Photo (Top): St Gertudes formerly a ladies college opened in 1908 at New Norcia

claimed to be the first of its kind to be built in Western Australia. It is also the site of the first pioneer flour mill While Berkshire Valley is not open to the public some of the buildings can still be seen from the roadside.

- 11 Miling:** First settled in 1906, Miling is one of the largest inland grain receival points in the State, handling in excess of 100,000 tonnes each year.
- 12 Watheroo:** The old Watheroo Station Tavern has been standing for 113 years.
- 13 Five Graves in Dalwallinu:** The five graves, recorded in detail in the popular local history book of the same name, were the final resting places of early pioneers. Included among them is Gustav Liebe a visionary man well ahead of his time. He was responsible for building many well known Perth Landmarks including His Majesty's Theatre, Peninsula Hotel (Maylands), the Perth Art Gallery in 1907, buildings in King St and railway station and other structures for the Midland Railway Company.

14 Boundary Riders Rock Hole:

Situated on the No.2 Rabbit Proof Fence, the hole was constructed by blasting out rock in 1904. It stored water, vital to boundary riders who were responsible for looking after the fence. It was taboo for anyone to touch this water as it was the lifeline of the Boundary Rider and his horse.

15 Wongan Hills Heritage Walk Trail and Pioneer Museum:

Starting and ending at the Visitor Centre the trail includes 22 historical sites, linked by the marked out "blue footprints." Creating a clear picture of days gone by, features include the Anglican Church (high on the hill), the old powerhouse, Dr Stennings residence and the first tea rooms. The museum is situated in the district's first hospital, and was opened in 1930 without any Government assistance. A captivating museum of pioneer days.

- 16 Calingiri:** The administrative centre of the Victoria Plains Shire is in the town of Calingiri, where the old general store and main street shops are a step back into the early 1900's. Discover the heritage B&B's and Farmstays in the Shire with a visit to the Admin Centre for details.

- 17 Bolgart Hotel and Bell Tower:** The Moss Rock Bell Tower at Bolgart has great significance for the locals and "rings" out an historical yarn. Hearing the story at the local Hotel (1916), washed down with their finest, is a great way to spend a few hours.

- 18 Yerecoin:** Originally, Monks from the Monastery bred horses in this area, for sale to the British Army market in India.

- 19 New Norcia:** Australia's only monastic town. The museum contains everything from the founder's gold teeth to gifts from Queen Isabella II, of Spain. The extensive array of artefacts explains the history of New Norcia and upstairs is the Monk's outstanding and famous art collection. Guided and Self guided walking tours featuring outstanding landmarks, including the Abbey Church, statue of Bishop Salvado, 19th Century sundial, Bishops Well.

- 20 Walebing Post Office (no public access):** In 1896, the Post Office was built from locally-quarried stone and was used as a repeater station for improved communications between Perth and Geraldton.



Photo: St James Anglican Church, Moora



Photo: Bindoon Road Board, Upper Chittering

Discovering Golden Horizons

2 Day: The Rural Experience

Within easy reach discover the culture and heritage of the days gone by in these idyllic rural lifestyle settings.

Day 1: Perth to Dalwallinu via Moora 262km, 3.5 hours

Head north out of the hustle and bustle through the Chittering Valley onto Bindoon, stopping for morning tea or simply buying fresh citrus from a roadside stall. Then head off to New Norcia to see Australia's very own monastic town. After visiting the Museum, take part in the guided tour of the town at 11am or 1.30pm, then wander further north to the beautiful country town of Moora where you can view the town's impressive historic stone buildings, public art and murals depicting the past present and future on the Moora Town Walk. Or you can simply relax and sample the local food from one of the cafes and eateries. Check out some of the army campsites around the area or take a 20 minute drive out to Berkskire Valley to catch a glimpse of the English version of New Norcia. Onwards to Dalwallinu to visit the region which is renowned for its prolific species of wattles which are in flower from July through to October.

Day 2: Dalwallinu to Perth via Wongan 253km, 3.5 hours

To make your visit memorable, visit the Dalwallinu Discovery Centre and collect a brochure and map to select an attraction or two in the area. Be sure to explore Dalwallinu's self-drive walking and wildflower trails. On your way, to Wongan Hills (75 kms), experience a classic country town in Ballidu. Wongan Hills has excellent dining and accommodation to make your journey easier. On your journey to Wongan Hills be sure to call into Mt. O'Brien (10kms) to experience the Wheatbelt landscape and Mt Matilda (11kms) to explore the flora and fauna of Wongan Hills. Heading towards the Great Northern Highway enjoy nature's pleasures at Rica Erickson Nature Reserve near Calingiri. As you make your way back to Perth be sure to stop through the picturesque Chittering Valley. Call in into the Chittering Visitor Centre for material.

3 Day: Explore the Natural Wonders of the Wheatbelt

Meander north of Perth for your perfect wildflower and nature getaway experience...

Day 1: Perth to Wongan via Calingiri 183km, 2.5 hours

Leave the big city and head for the hills (Wongan Hills) but on the way be sure to stop at Bindoon, home to a famous bakery and the beautiful stone Holy Trinity Church. Approximately halfway between Great Northern Highway and Calingiri is the must see Rica Erickson Nature Reserve and Old Plains Road Nature Reserve where there is an abundance of wildflowers and fauna. After passing through Calingiri and as you approach Wongan Hills the large expanse of Lake Ninan salt lake will come into view. In Wongan Hills call into the tourist centre to gather information on walk trails, museum and other sites to be explored. Wongan Hills has a fabulous shopping precinct with cafes, giftware and parks.

Day 2: Wongan Hills to Moora via Dalwallinu 165km, 2 hours

Drive north to Dalwallinu and visit the Dalwallinu Discovery Centre for the most recent wildflower sightings, including the stunning Wreath Leschenaultia, as they are located some distance from town. Head south again on your way to Moora where there is a number of accommodation options to suit your budget and taste. Call into the Moora Community Resource and Visitor Centre for some ideas.



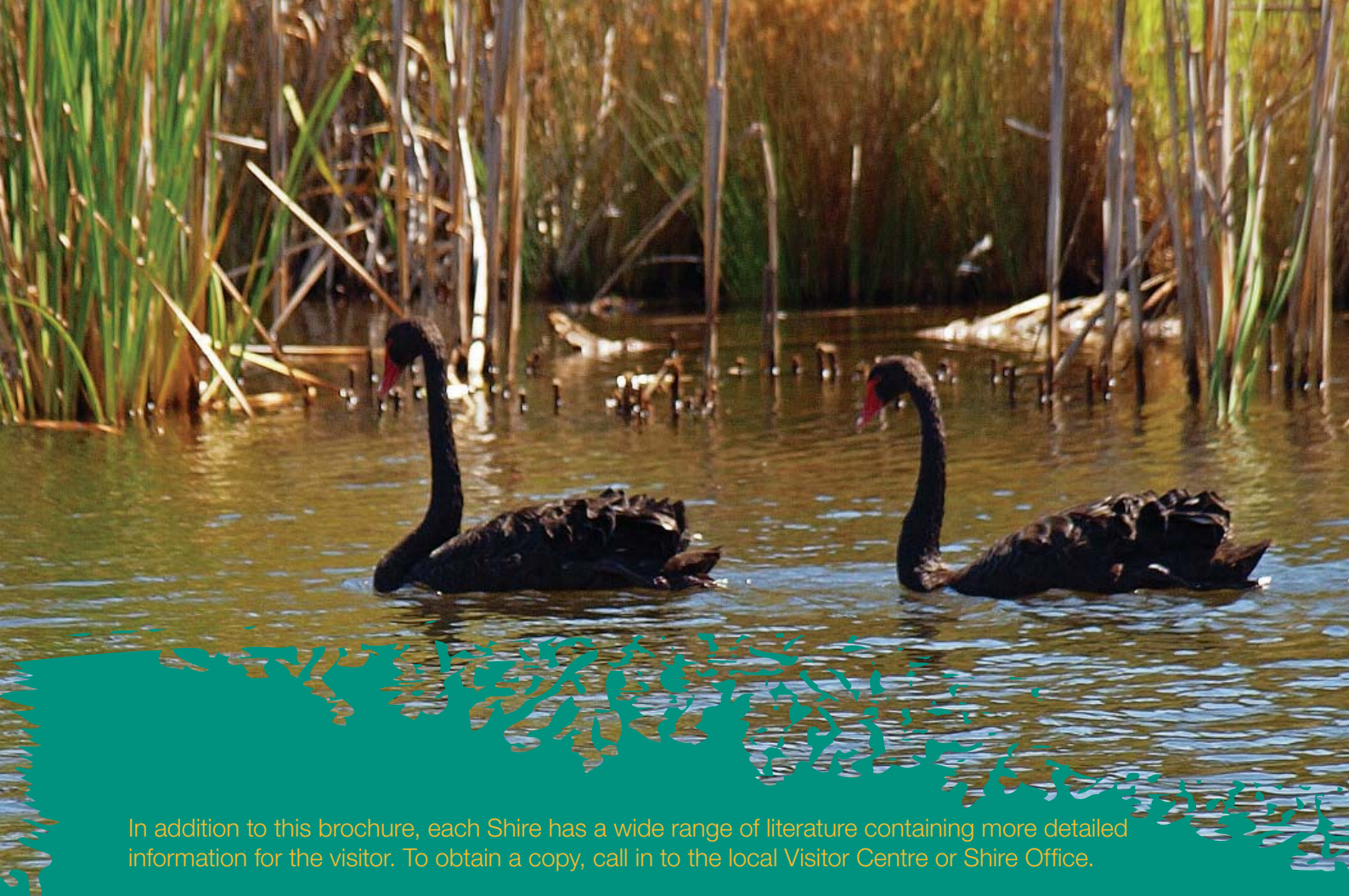
Day 3: Moora to Perth 171km, 2.5 hours

Wake up in the fresh country air and head off on a short walk along the Carnaby's Cockatoo Interpretive Walk Trail. Spot one of these magnificent birds and discover the flora and fauna that calls Moora home. Make sure you experience the Western Wildflower Farm at Coomberdale (20km north of Moora) where you can take a tour to see, touch and smell the wildflowers. Before heading back to the city on the Great Northern Highway you will have the opportunity to stop at New Norcia, home of a Benedictine community, and then Bindoon, where you can discover a variety of experiences.



Photo: Top: Lake Chittering, Shire of Chittering
Bottom: Flying flock of the endangered Carnaby Cockatoos, Moora





In addition to this brochure, each Shire has a wide range of literature containing more detailed information for the visitor. To obtain a copy, call in to the local Visitor Centre or Shire Office.

Bindoon

Chittering Visitor Centre
Phone: (08) 9576 1100
6180 Great Northern Highway, Bindoon
www.chittering.travel

Shire of Chittering
Phone: (08) 9576 4600
6177 Great Northern Highway, Bindoon
www.chittering.wa.gov.au

Calingiri

Visitor information is in the Shire of Victoria Plains Office.
Shire of Victoria Plains
Phone: (08) 9628 7004
28 Cavell Street, Calingiri
www.victoriaplains.wa.gov.au

New Norcia Visitor Centre
Phone: (08) 9654 8056
Museum and art centre museum@newnorcia.com

Dalwallinu

Dalwallinu Discovery Centre
Phone: (08) 9661 1805
Johnston Street, Dalwallinu WA 6609

Wubin Information Centre
Phone: 0427 553 622
Railway Station, Wubin WA 6612

Shire of Dalwallinu
Phone: (08) 9661 0500
58 Johnston Street, Dalwallinu WA 6609
www.dalwallinu.wa.gov.au

Moora

Moora Community Resource & Visitor Centre
Phone: (08) 9653 1053
65 Padbury Street, Moora
www.moora.crc.net.au

Shire of Moora
Phone: (08)9651 0000
34 Padbury Street, Moora
www.moora.wa.gov.au

Wongan-Ballidu

Wongan Hills Visitor Centre
Phone: (08) 9671 1973
Railway Station, Wongan Road, Wongan Hills
www.wonganhillstourism.com.au

Shire of Wongan-Ballidu
Phone: (08) 9671 1011
1 Elphin Crescent, Wongan Hills
www.wongan.wa.gov.au

Dump Point Locations

Bindoon - Great Northern Highway (town oval, adjacent to public toilets near Visitor Centre)

Calingiri - Caravan Park, Cavell Street

Dalwallinu - Caravan Park, Dowie Street

Moora - Roberts Street (opposite Checkpoint Cafe)

Wongan Hills – Railway Station, Wongan Road (near Visitor Centre)

Photo: (Top) Black Swans on Spoonbill Lake, Bindoon.

PLEASE DRIVE SAFELY AND ENJOY.