



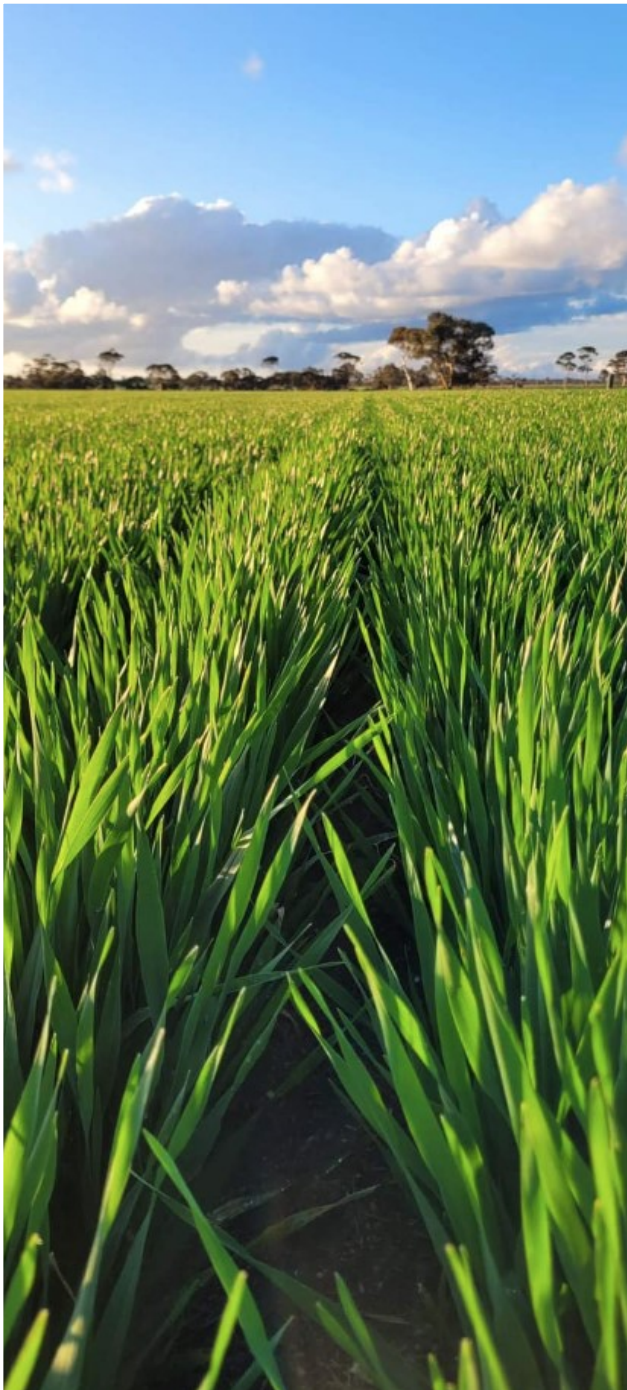
August 2024

SHIRE OF VICTORIA PLAINS

Please also see our user friendly website at <https://www.victoriaplains.wa.gov.au> or

Follow us on Facebook

YOUR LOCAL COMMUNITY NEWSLETTER



From the Shire President

Pauline Bantock



Council has adopted the 2024-25 Annual Budget.

It's a great feeling to be able to fund projects which come directly from our strategic planning. Over the last couple of years, our Shire Team and the Community have put in a lot of effort to formulate plans that are relevant. These plans guide the budget process.

There is much excitement about the planned capital projects valued at over \$8.6 Million. The Shire has actively sought grant funding to help achieve this level of investment in our community. This success of our applications keeps our need for rates revenue at a realistic level of \$3,851,656.

As one of the few shires to achieve a successful application to the Wheatbelt Secondary Freight Network, we can invest over \$1.65 million into our Ag Lime Route. The early community input received through our sport & recreation planning, enabled us to reformulate our application to the Local Roads and Community Infrastructure Program. Within the \$381,412 of funding, there are projects spread right across our Shire and on several types of activities.

Your Council looks forward to joining our Management Team at the upcoming budget presentations. If you are interested in the Shire, I highly recommend you attend a session. Details on page 22.

At the July meeting, Council also accepted the end of financial year review of the implementation plan to the corporate business plan. The Shire has achieved a success rate of between 92-96% of tasks over our 6 base measurements.

Also at the July meeting, council endorsed the Edmonds Street concept plan for housing and short stay accommodation. Victoria Plains has been the lead through the Wheatbelt joint housing project, and we look forward to further success in our application to the Commonwealth's housing support program.

Kind Regards,

Cr. Pauline Bantock
Shire President

Contact Main Roads

Our team is available 24/7 to help you with any questions you have or information you may need regarding our road network. You can call us on 138 138

<https://www.mainroads.wa.gov.au/contact-us/>



From the Chief Executive Officer

Sean Fletcher



I am pleased the Shire has been able to produce an effective, yet well balanced budget for 24/25. Council has recognised that through this budget, the Shire has completed a two year consolidation process. This now means that for the next two years, the Shire will have a solid platform on which to implement key plans and roll out the next series of projects.

The landscape is changing rapidly for Victoria Plains and the Shire is positioning itself to take advantage of the opportunities presented so it doesn't get left behind. Set against the backdrop unfolding regarding the Energy Transition, as a developing "hotspot" regarding mining and exploration (rare metals, gas and helium) and the expansion of key businesses across the Shire, the diversification of the Shire's economy is starting to unfold. This means the Shire is seeking ways to facilitate bringing together its communities and the key impacts including the upgrade of the South West Interconnected System (SWIS) to accommodate the increase in electricity demand, the roll out of key windfarms in the Shire that will feed into the upgraded 132kVa powerline, the development of the Caravel Copper Mine project and supporting the retention of the Live Sheep Trade.

As you may have read previously, we are in the process of developing an affordable key worker housing program to support both the Shire and key business that is also flexible for other users.

We are rolling out the Sport and Recreation Masterplan with "quick win" funding of \$140,000 and then the short, medium and long term actions in subsequent years.

We will be rolling out the Economic Development Strategy from September onwards which includes key actions around the energy transition, marketing the Shire, tourism, the development of more industrial land and the submission of a business case to help plan for the development of the Shire's six precincts (towns and settlements).

The Shire has been successful in receiving \$367,000 in funding which has allowed us to construct three new transfer stations for our three tips. Once they are in place, we will engage with the community in how to use these new facilities including e-waste. We have also been successful in receiving over \$300,000 in grant funding to work on water projects and we expect the support for such projects to continue.

Under the Wheatbelt Secondary Freight Network program we will receive funding this year to finish of the Mogumber Yarawindah road improvements and we will be starting the geo-technical work on Calingiri New Norcia Road and some key patching work. We are expecting to have the Calingiri New Norcia Rd and Toodyay Bindi Bindi Rd Intersection realignment project completed by year's end. The latter will also see it tied in with the Regional Road Group improvements to the Toodyay Bindi Bindi Rd from the edge of the Calingiri townsite (north).


Key work is also going to be undertaken around the development of the Shire's water strategy (which is underway) and mitigation activity fund works regarding a State pilot project for bushfire mitigation over the next three years.

Both Council and I, along with my staff are working hard regarding a new future for the Shire based on your strategic community plan and we thank you for your support in making this happen.

Continued on from the Chief Executive Officer Sean Fletcher

For 24/25 (and flowing through to 25/26), to help ameliorate the unfolding economic challenges, the focus will be on:

Corporate Business Plan Summary



C L E A R V I S I O N

- 4.1 Forward Planning**
 - ✓ Desktop Review of SCP
 - ✓ Participation in AROC & Zone Meetings
- 4.2 Communication**
 - ✓ Develop Council/CEO Communication Agreement (DLGSC Model)
 - ✓ Amend Engagement Policy to Reflect Changes to the Act
- 4.3 Proactive and well governed Shire**
 - ✓ Implement Automated Compliance Calendar
 - ✓ Finish Implementation of Asset Management Strategy
 - ✓ Implement Minute/Agenda Software
 - ✓ Close Out Implementation of Council First

Corporate Business Plan Summary



E N V I R O N M E N T

- 3.1 Environmental Health and Waste Services**
 - ✓ Finish e-Waste/Transfer Stations
 - ✓ Continue to Improve Cemetery Aesthetics
 - ✓ Ensure Calingiri Sewerage Ponds are Future Proof
- 3.2 Conservation of Natural Environment**
 - ✓ Implement Bio-Diversity Plan
 - ✓ Implement MAF - \$164,000 & Sign off on \$750,000 3 Year Pilot Program
 - ✓ Undertake Corella Management – Joint AROC Project
 - ✓ Install Animal Pound
 - ✓ Develop & Implement Water Strategy


Corporate Business Plan Inclusions



C O M M U N I T Y

- 1.1 Healthy, Connected & Safe**
 - ✓ Roll out Disability Access Inclusion Plan
 - ✓ Review the Aged Friendly Community Plan
- 1.2 Inclusive Community Activities**
 - ✓ Community Grants Scheme \$40,000
- 1.3 Recreational, social and heritage**
 - ✓ Implement the Sport and Recreation Master Plan \$140,000
 - ✓ Implement Local Heritage Strategy
- 1.4 Emergency Services**
 - ✓ Implement new Local Emergency Management Arrangements
 - ✓ Plan for Emergency Facility Upgrades


Corporate Business Plan Summary



E C O N O M Y

- 2.1 Support diverse industry**
 - ✓ Implement Economic Development Strategy (Marketing Plan, Tourism Plan, Industrial Lots, Precinct Development)
 - ✓ Continue Advocacy to Improve Telecommunications Networks
 - ✓ Improve Existing Water Supplies – Shire & Water Corp
 - ✓ Improve Shire Housing Stocks – Edmond Street Subdivision
- 2.2 Safe and efficient Transport Network**
 - ✓ WFSN – Mogumber Yarawindah Final Section \$1.4m
 - ✓ Undertake RAV Network Assessment
 - ✓ Truck/Vehicle Parking Bays: Calingiri, Yerecoin, MY Rd
- 2.3 Visitors Experience**
 - ✓ Secure Funding for Edmond Street Caravan Park
 - ✓ Revisit Townscape, Visitor and Signage Plan

Kind Regards,
Sean Fletcher
Chief Executive Officer



Ordinary Council Meeting

Will be held
Wednesday
28th August 2024
Commencing at 2:00 pm in the
Calingiri Council Chambers

NEWSLETTER SUBMISSION CUTOFF

Newsletter submissions are due by
4:00 pm on the last Friday of the month.

All submissions to be emailed to:
candice.watson@victoriaplains.wa.gov.au

Late submissions may not be accepted.



Confidential Matters

When sending confidential matters to the Shire,
please ensure emails are
forwarded to
reception@victoriaplains.wa.gov.au
Labelled 'Private and Confidential'

From the Deputy Chief Executive Officer

Colin Ashe



The 2024-25 budget was adopted by council on the 24 Jul 2024 and contains several initiatives planned to be undertaken during this financial year. 2024-25 will be the 3rd year of current management team and as advised to council during briefing sessions leading up to the budget, *'This time last year, we said - consolidate, plan in 23/24 and then launch in 24/25'*. Hopefully, residents and ratepayers are starting to see the changes occurring in what is a rapidly changing environment for the Shire of Victoria Plains.

In terms of the rate base, as communicated in previous issues, valuations as set by the Valuer General increased by approximately 30% for 2024-25. This included GRV (residential properties) which are re-valued every 5 years. To ensure a fair and equitable rate increase, the shire discounts the rate in the dollar downwards, and then applies the rate increase, which for 2024-25 was 9%. Not all shires do this, but instead take the valuation increase and then add the rate increase.

To provide some context to this;

- The Local Government Cost Index (LGCI), a measure equivalent to CPI but centred on the purchases local governments was 7.1% combined for 23-24 and 24-25 financial years.
- Other surrounding shires have rates (cents) in the dollar for UV (farming) of 0.005490 and 0.00610. The SoVP is 0.004758.
- For GRV other surrounding shires are 9.1714 and 8.901, the SoVP is 11.883 cents in the dollar.
- GRV Minimum rate payment range from \$830 and \$782 with the SoVP being \$687.

Any ratepayer experiencing financial hardship should contact the shire as soon as possible and alternate arrangements can always be made.

BUDGET AT GLANCE:

Overleaf is the budget at a glance that was included with your rate notice and highlights some of the projects the shire will be undertaking in 2024-25 as part of the Strategic Community Plan. This includes \$8.645m in capital expenditure, focusing on waste management, sport and recreation, plant replacement and the traditional road construction program.

ERP

The new computer system has gone live, albeit with a few glitches as to be expected. Ratepayers will observe the new format on the rate notice itself and BPAY option for payment. One of the glitches was the logo, which hasn't come out as good as the previous one and there are a couple of others we are working on to improve so please bear with us.

Similarly, the actual rate notice process was different than in previous years, which normally would not be a problem if there was some lead time – how we planned to do it was nothing like what was expected and this was a challenge. But such is the culture at the shire now, when these challenges arise the team gets together, finds a workaround and we get it done – this time with 6 minutes to spare to get the rate notices to the post office!

There has been a lot of work that has gone into this through the vendor and shire staff (who are still learning the system) across the core financial modules with some stress but we're coming out on the other side of it. A big thank you to my team, they have had to keep the day-to-day operations going in the old system whilst setting up and testing in the new – their efforts and certainly not underestimated by myself and the management team to get this across the line.

Already my team have commented on the ease and efficiency of the system and this will get better as they get more experience.

Sport and Recreation Master Plan (SRMP)

This will be issued to stakeholders in Aug 24 for final comment and then recommended for adopted by council. Some outcomes have already been pre-empted in the quick wins listed on the budget at a glance document with the SRMP being more of the 'big ticket items' we want to plan for in 2024-25 (i.e. securing grant funding) and then go after in 2025-26.

Continued on from the Deputy Chief Executive Officer: Colin Ashe

Budget 2025 at a Glance...

Operating Summary

- Continued investment in maintaining Shire Assets (road maintenance, parks and gardens, housing and community facilities).
- \$60,000 allocation for Environmental Sustainability Officer
- \$75,000 allocation for Economic Development Contractor
- \$278,295 Loan Repayments
- \$20,000 for Recreation Management Plan
- \$105,765 Community Water Supply Partnership (grant funded \$67,290)
- \$40,000 Community Grant Fund
- \$164,000 Fire Mitigation Funding (Grant funded)
- \$71,320 ICT Refresh



Sport and Recreation Quick Wins

- \$77,000 Calingiri Sportsground Lighting
- \$30,000 Calingiri Playground Equipment
- \$15,000 Mogumber Cricket Pitch
- \$5,000 Bolgart Basketball and Skatepark clean up
- \$5,000 Piawaning Expo

Community

- Continued support and hosting Senior Events and doubling of funding to \$40,000 for Community Grants.
- Reinvigorate Library initiatives various demographics
- Grant funding plans for larger and complex initiatives such as sporting facilities and EV charging stations.
- Contribution to Yerecoin 100th celebrations



PAGE 6

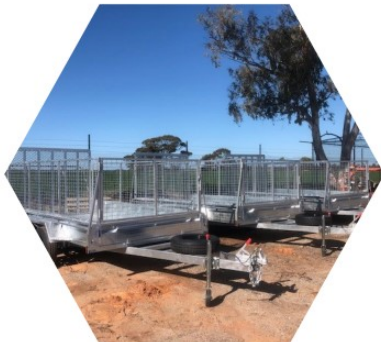
Capital Summary

A capital works program totaling \$8,644,945 for investment in infrastructure, land and buildings, plant and equipment and furniture and equipment is planned as follows:

- \$67,000 Staff housing and Calingiri Caravan Park Development (grant funded).
- \$3.124m Land and Buildings including \$2.900m Edmond Street Concept Plan (all grant funded).
- \$891,500 Plant and Equipment including a new Service and Tip Truck.
- \$684,941 Other Infrastructure including Gillingarra Water Supply, Truck Parking Bays and Waste Sorting.

\$3,896,504 Road Construction including;

- Calingiri - New Norcia Road Intersection.
- Mogumber - Yarawindah Road.
- Toodyay - Bindi Bindi Rd Nth.



Budget Summary

- \$8.645m Capital Expenditure.
- Over \$300,000 in shire buildings and facilities maintenance.
- \$0.891m Plant Replacement.
- Maintains Healthy Reserve Balance.
- Meets Strategic Outcomes.



PAGE 7

Kind Regards,
Colin Ashe
Deputy Chief Executive Officer

From the Manager Works and Services

Silvio Brenzi



The Calingiri sports ground has recently been sprayed for broadleaf weeds using the new spray unit. We can now add to our maintenance program to improve the surface even further for the clubs using these facilities. By keeping weed levels low during the winter months, a stronger fuller grass cover is able to be renovated during spring enabling better recovery times.

Residents in Calingiri can expect roadworks in the next few months as the Regional Road Group program continues. Works will commence late September to early October at the Yulgering and Toodyay—Bindi Bindi road intersection and head north for 2.4km. This will involve laying 100mm new gravel over the surface and 'wet mixing' it in with a stabilising machine. This is the same process that was used in February this year at 4 km out from town, near the Catabody Road intersection. The existing curbs and pathway will remain near the homes in town. Some dead verge trees will be removed as part of this process.

Other roadworks through Roads to Recovery this year include:

- Tree clearances on Gouge Road in Calingiri
- Reseal to Bolgart East Road for first 1 km out from town past the Bowling Club
- Reseal to Poincare Street and intersections in Bolgart
- Reseal to Cavell/Haig Street, Edmonds/Young Street, intersections in Calingiri
- Multiple repairs and reconstruction to Calingiri New Norcia Road
- Multiple edge patching to Toodyay—Bindi Bindi Road.

Preliminary works for vegetation clearances on Calingiri New Norcia Rd will also commence next month in preparation for 25/26 Wheatbelt Secondary Freight Network program. This is the next road approved following our completion of Mogumber Yarawindah Road later this year with the final stage to the GNH.



Kind regards,
Silvio Brenzi
Manager - Works and Services

From the Community Development Officer Katrina Humphries



Big thank you to all that attended the Christmas in July that the Shire hosted in Bolgart on the 31st of July. We had the lovely Allesandra from Advocare come and join us and provide our residents with some wonderful and useful information around Aged Care Assistance, Helplines, Advocacy Rights, Aged Programs, etc. Also thanks to the lovely ladies from Varnahs Kitchen Gig who provided the catering for lunch of a delicious roast dinner and dessert.

I also would love to take this opportunity to congratulate once again our Community Groups who were successful in the Shire of Victoria Plains Community Grant Funding 24/25 Round. The Community Groups submitted some great projects and the Shire is excited to be able to support all of the submissions that were received. This year the shire has increased the Community Grant from \$20,000 to \$40,000 so that more community groups were able to receive the financial assistance to complete their projects that benefit the community.



Kind Regards,
Katrina Humphries
Community Development Officer

From the Ranger

Peter Smith



RANGER DAY

Come and see us at any of the locations below on
Monday 9th of September for dog registrations &
microchipping



Time and Locations

- ✓ Bolgart Hall - 7:30am to 8:30am
- ✓ Mogumber Hub - 9:30am to 10:00am
- ✓ New Norcia Roadhouse - 10:30am to 11:30am
- ✓ Yerecoin Traders - 12noon to 2:00pm

Microchipping is \$50 per dog and cash only on the day

The Importance of Microchipping!!

There have been a few incidents of late where a dog has jumped off a ute whilst the owner has pulled off the road for a moment only to then drive off without realising they have left their dog behind. If these dogs are microchipped, they can be scanned and reunited with their owner straight away.

Registration Fees are payable on the day by Cash or Eftpos:

- 1 year Sterilised - \$20
- 1 year Unsterilised - \$50
- 3 year Sterilised - \$42.50
- 3 year Unsterilised - \$120
- Lifetime Registration Sterilised - \$100
- Lifetime Registration Unsterilised - \$250



Pensioner Concessions are 50% discount and Working Dog Concessions are 25% discount. Proof must be provided through tax documents and/or receipts that your dog is classed as a working dog



Kind Regards,
Peter Smith
Ranger

From the Emergency Management Officer

Mikayla James



I hope you've managed to stay nice and warm this winter so far! Not long now and it will be warming up again. Now is the perfect opportunity to check your fire breaks and ensure you and your property are well prepared for summer. You'll find in your rates a bushfire safety booklet. Page 5 will have information about fire breaks and what your responsibilities are as landowners. Take note that if your property is over 4001 square metres, you have different requirements compared to properties under 4000 square metres. The following pages in the booklet are a handy reference on how to ensure your firebreaks are the gold standard, and how to create an appropriate defensible space for your property. The cutoff is October 1st. Failure to comply with these regulations may result in penalties up to \$5,000.

The emergency management team have also been busy organising and running more training for our bushfire volunteers. On the 3rd and 4th of August, we held an Advanced Bushfire Fighting course along with a Crew Leader course, equipping them with key knowledge about bushfires and advanced tactics and leadership tools to help lead their crews to effectively and safely put out fires as we begin to head into the upcoming fire season.



If you are a current bushfire volunteer within the shire, make note of September 3rd and 4th as we are going to run accelerated introduction courses. Your captains will be able to provide you with more information on the courses, and which ones you will be enrolled in. If you can't make it, please let either Nic or myself know. More information will be provided closer to the date.

Kind Regards,
Mikayla James
Emergency Management Officer



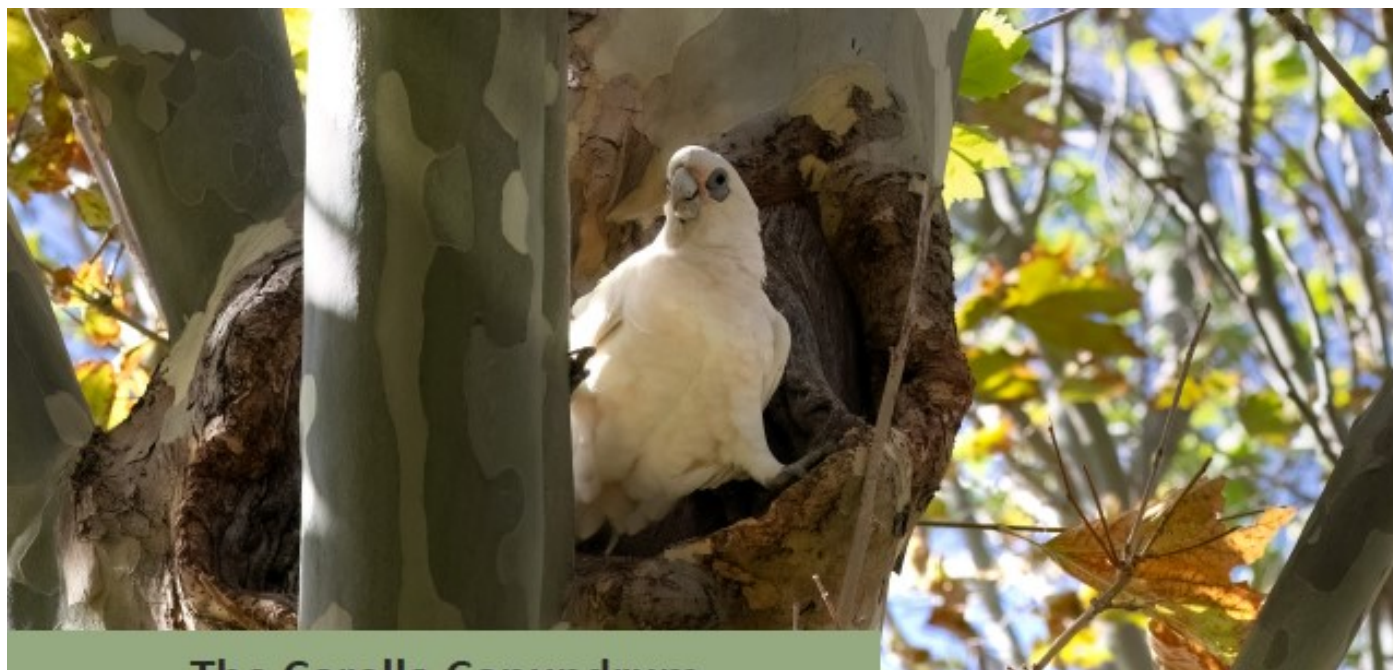
Colin Ashe, Deputy Chief Executive Officer and Katrina Humphries, Community Development Officer had the privilege of attending the Bolgart CWA Centenary Celebrations.

Well done to all involved, this was a fantastic morning/afternoon that was well received by many. From the decorations of the hall to the lunch that was served and the wonderful people that were in attendance you should all be proud of your efforts.

There was some wonderful history, a bit of nostalgia and some great memorabilia on display. The community work that the Bolgart CWA does each year is extremely appreciated by all community members. From Biggest Morning Tea fundraisers to stalls to community events these women really do an amazing job.

Congratulations again Bolgart CWA on your 100th Celebrations.





The Corella Conundrum

In the Western Australian Wheatbelt, white corellas have reached plague proportions on the back of our nation's largest export grain producing region. So significant are the social, economic and environmental effects from the birds, that management has become imperative.

There are three species of corella in the Wheatbelt. They are hardy, highly adaptive, birds that live between 15 - 70 years depending on the species, producing 1- 4 eggs per year. They easily out-compete galahs and cockatoos for precious nesting hollows and fledging survival rates are strong. Without intervention, numbers will continue to grow.

This fact sheet outlines the options open to councils, industry and residents in controlling these Australian native birds who, through human intervention, have become so significant a liability.

Essentially options fall into two categories, culling and habitat management, both of which have pros and cons.

Culling

Shooting

In Western Australia, shooting is currently the only method of culling corellas that can be undertaken without a permit from the Department of Biodiversity, Conservation and Attractions (DBCA).

Pros

If the birds are taken by surprise, and the work is undertaken by teams of experienced operators, shooting can be effective. The birds are however highly intelligent and can quickly recognize patterns in behaviour, flying away before shooters can mobilize.

Cons

Shooting is not permitted in densely populated town settings. Injured birds can fly distances before dropping into school grounds, backyards and public spaces causing significant public distress. Most Wheatbelt Councils report that the community outcry from shooting is so severe that shooting the birds is not an option.

Trapping

Grain can be used to trap birds using nets or cages after a period of pre-feeding.

Pros

Quieter, easier to keep away from the public eye.

Cons

Requires pre-feeding and specialist equipment.

It's more expensive and requires a 'Taking of Fauna' permit, issued by DBCA. This rigorous permit process requires the applicant to demonstrate expert knowledge of bird handling, species identification and a range of other competencies. There also needs to be a method of culling the birds after they have been trapped. This might be shooting or could be carbon dioxide or carbon monoxide gas chambers.

Alpha-chloralose

Another potential method, which is under investigation, is the use of the chemical alpha-chloralose. The drug acts as an anaesthetic to the birds. It can be supplied to the birds in lethal or sub-lethal doses. It is currently approved for use in lethal doses with pigeons however, if this method were to be used in the Wheatbelt, other non-target grain eating birds, including endangered black cockatoo species, could be inadvertently killed.

Consequently, sub-lethal doses would be required if it were to be approved for use on corellas so that any non-target species that succumbed could be moved to safe recovery facilities, while the target species are gathered and gassed or shot.

Currently the approval process for alpha-chloralose is in step 2 of a 5 step process that requires a collaboration between the Department of Health, DBCA and the Department of Primary Industries & Regional Development. It has taken two years to reach this stage in the process.

Habitat management

Non-lethal control measures focus around preventing the birds from being able to damage infrastructure, or encouraging the birds to move away from areas where they are a problem. None of these options however, are an easy fix.

Damage prevention includes strategies such as putting powerlines underground. This would be effective but is cost prohibitive. New built infrastructure can be made to prevent damage exchanging rubber for metal, adding spikes or rolling polypipes to potential landing sites. Again, this adds to the cost of builds. Retro-fitting existing infrastructure is more difficult and expensive again.

Watering points such as dams can be revegetated which deters corellas from landing as it obscures their view of approaching predators. A farmer in south Australia has designed a system for water troughs which still allows stock access whilst making it more difficult for corellas to land.

The birds can be lured away from problem sites in towns and CBH depots by creating attractive alternatives elsewhere. Known as decoy sites, a key requirement is plentiful access to grain, and the provision of a safe, undisturbed place to roost. At the same time, it is necessary to take actions to make problem roosting sites less attractive.

Apart from the expense, habitat management effectively relocates the problem, rather than controls it.

References:

DBCA (2024): Fauna Licences. <https://www.dbca.wa.gov.au/licences-and-permits/fauna> accessed 5/4/24



wheatbelt
natural resource
management



AROC



Are you ready to kickstart your career in civil construction? Look no further! We're thrilled to announce an exciting opportunity for motivated individuals to join our team as **Trainees in Civil Construction**.

About Us: At the Shire of Victoria Plains, we pride ourselves on delivering high-quality construction projects that shape communities and improve infrastructure. With a strong commitment to safety, innovation, and sustainability, we are leaders in the civil construction industry.

Who We're Looking For:

We're seeking a motivated and enthusiastic person to undertake a **Certificate II in Civil Construction (Road Construction and Maintenance)**. This traineeship qualification has a nominal duration period of 12 months. Continued employment beyond the 12-month traineeship period is not guaranteed.

In the role of Civil Construction Trainee, you will be responsible for carrying out a variety of manual labour and small plant operations associated with the delivery of civil construction projects and maintenance tasks within the Works and Services of the Shire.

Traineeship Details:

- **Duration:** 12 months, nominal 76 hours per fortnight, nine (9) day fortnight as per Agreement.
- **Location:** Shire of Victoria Plain Depot, Calingiri, WA, 6569
- **Paid Opportunity:** Earn while you learn with a competitive trainee salary.
- **Hands-On Training:** Gain a nationally recognised qualification and 12 months of on-the-job practical experience working on real projects alongside experienced professionals.
- This Regional Traineeship Program has been funded by the Department of Primary Industries and Regional Development. The program aims to provide people and encourage them to stay and work in their local regional community. The traineeship is a vocational education pathway focused on the development of skills and knowledge that is based on local business and industry needs.

Key Responsibilities:

- Assist with site preparation, earthworks, and excavation activities.
- Learn to operate construction machinery and equipment under supervision.
- Follow safety protocols and regulations to ensure a safe working environment.
- Collaborate with team members to complete projects on time and to a high standard.
- Take initiative to learn new skills and techniques to enhance your contribution to the team.

The Successful Candidate to Ideally Possess:

- Aged 17 years or older and no longer at school.
- You will demonstrate a genuine passion, and the resilience required for physical work outdoors.
- Have a 'C' class license as a minimum.
- Basic literacy, numeracy, and oral communication skills sufficient to complete a Certificate II in Civil Construction (Road Construction and Maintenance).
- General Construction Induction White Card.

How to Apply:

- A copy of your current Resume and a cover letter explaining why you are interested in this traineeship no more than two pages to: ericha.mcclurg@victoriaplains.wa.gov.au.
- Call 9628 7232 if you wish to speak with Silvio Brenzi - Manager, Works and Services.

Application Deadline: 30th August 2024, at 10.00 AM (Late application will not be accepted)

**** Please note, only shortlisted candidates for this role will be contacted.**

ECONOMIC DEVELOPMENT AND TOURISM COORDINATOR - SHARED SERVICE

DATE ADDED:	2-Aug-2024
CLOSING DATE:	9-Sep-2024 09:00 AM

ECONOMIC DEVELOPMENT AND TOURISM COORDINATOR

- Permanent Full Time Position (76 hours per fortnight)
- 3 Year Performance Based Contract
- All inclusive remuneration package \$110,000 - \$145,000 per annum (based on qualifications and experience)
- 11.5% Guaranteed superannuation plus up to an additional 6% matching employer contribution
- 20 days annual leave (pro-rata) and 2 days Public Service Leave

About the Shire of Chittering

The Shire of Chittering is located 56km north east of the Perth CBD and covers a geographic area of 1,200km² with over 5,400 residents. The Shire consists of three townships: Bindoon, Muchea and Wannamal; together with three other localities – Mooliabeenee, Chittering and Lower Chittering. Our dedicated team of approximately 60 employees, based in Bindoon (just 30 minutes from Ellenbrook), is committed to fostering a positive and collaborative work culture. We offer diverse opportunities for professional growth and development.

About the Shire of Victoria Plains

The Shire of Victoria Plains is in the central wheatbelt of Western Australia 135 kms north-east of the City of Perth and only an hour and 15 minutes from Ellenbrook. Traditionally and predominantly a prosperous farming district, the Shire has four towns: Calingiri, Bolgart, Yerecoin, Piawaning and two settlements: Gillingarra and Mogumber. The Shire also boasts Australia's only Monastic Town, New Norcia, which welcomes approximately 70,000 visitors to the town each year. Even though the Shire has a small population, it is filled with community energy and enthusiasm, making it a special place to live. The Shire is committed to diversity and inclusion within our workforce.

About the Position

The Shire of Chittering and the Shire of Victoria Plains is seeking an Economic Development and Tourism Coordinator to proactively oversee the Economic Development Strategy and progress the identified actions (addressing the strategic pillars of economic growth, local business growth and increase visitors) in line with Councils Strategic Community Plan and other informing planning documents and strategies. You will be required Coordinate, manage, and support economic and tourism projects and maintain networks, relationships and partnerships with relevant stakeholders, for example, business operators, industry representatives, government bodies and community.

About You

The successful candidate will ideally have exceptional organisational skills, time management, problem solving and interpersonal skills while modelling a can-do attitude and is a collaborative team player.

Applications are due by 9am, Monday 9 September 2024. Late applications will not be accepted. For further information, contact Human Resources at chatter@chittering.wa.gov.au or call (08) 9576 4600. We may commence interviews upon receipt and reserve the right to close the position early.

We value diversity and are committed to providing an inclusive work environment where everyone is treated fairly and with respect. As an equal opportunity employer, we encourage applications from all backgrounds.

Melinda Prinsloo
Chief Executive Officer





Grant Writing Workshop

WOULD YOU LIKE THE OPPORTUNITY TO LEARN HOW TO
WRITE YOUR OWN GRANTS?

WHITNEY CONSULTING IS COMING TO CALINGIRI TO HOST A
GRANT WRITING WORKSHOP FOR ALL OF OUR COMMUNITY
MEMBERS.

*"WHITNEY CONSULTING DELIVERS PRACTICAL, INTERACTIVE
WORKSHOPS THAT WILL IMPROVE YOUR GRANT WRITING SKILLS
AND KNOWLEDGE. OUR WORKSHOPS ARE TAILORED TO MEET
THE SPECIFIC NEEDS OF YOUR ORGANISATION AND WILL LEAVE
YOU WITH MORE CONFIDENCE AND UNDERSTANDING OF WHAT
GRANT ASSESSORS WANT."*



Alex Hodges

Research and Funding
Whitney Consulting

August 20th 2024
10:30AM TO 1:30PM

Calingiri Sports Pavilion,
Lambert Street, Calingiri

FREE COMMUNITY WORKSHOP

Register your attendance to
katrina.humphries@victoriaplains.wa.gov.au
by the 18th of August 2024



Department of **Transport**

Department of **Primary Industries and Regional Development**

Regional Pensioner Travel Card

The **Regional Pensioner Travel Card** provides eligible pensioners with up to **\$675** a year toward the cost of fuel and taxi travel from participating providers.

Visit your participating regional **post office** for an application form.

Am I eligible?

The Travel Card applies to regional residents in receipt of one of the following:

- Centrelink Age Pension
- Carer Payment
- Disability Support Pension
- Department of Veterans' Affairs Service Pension
- Social Security Age Pension
- Income Support Supplement.



For assistance call the **Travel Card Information Line** on **1300 666 609** or visit **www.wa.gov.au/travelcard**.



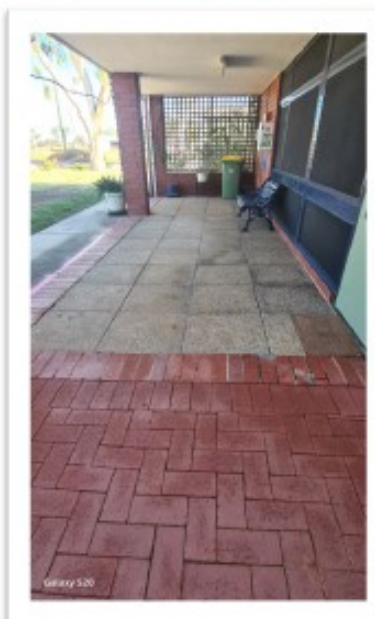
YERECOAIN PRIMARY SCHOOL

Term Three Biological Science — School Vegetable Garden

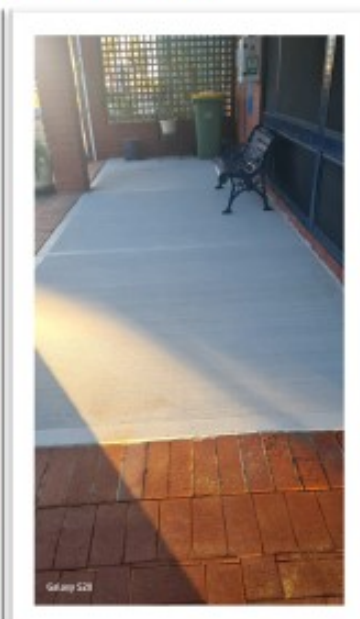


All students have been busy digging, weeding and planting a vegetable garden in the raised beds. They have done a fabulous job! Hopefully their careful nurturing will combine with the rain and sunshine to produce some fresh, tasty results in the months ahead.

Resources Upgrade...



From this...



to this!

Over the school break we have had an upgrade to the front of the Administration entrance, creating a safer and tidier working environment. The uneven slabs were removed and replaced with a new smooth concrete pad.

Fluid Art—with Wongan Ladies



Yerecoin Primary School was recently privileged to welcome two talented ladies from Wongan Hills to present an art class. The students were taught “Fluid Art”, a paint mixing, dipping and pouring process which resulted in some very beautiful canvasses. Sincere thanks to Mrs Kathie Coutts and Mrs Sylvia Donnellan for their support and expertise. The students and staff all had a very rewarding experience.



Celebrating Student Achievement



Congratulations to Megan on achieving a merit award for her excellent work, sounding out words when writing.



WHAT'S ON AT CPS

Phone: 96288 500 - Email: Calingiri.pseeducation.wa.edu.au - Address: 18 Cavell Street Calingiri

CROSS COUNTRY

At the end of last term, our students travelled to Yerecoin to compete in the 2024 VPSSA Cross Country event. Well done to everyone for your efforts on the day.



KALGOORLIE CAMP

In week 2 our Year 4/5/6's went to Kalgoorlie for the week on school camp with Kalanni PS, Miling PS & Cadoux PS



AROUND THE SCHOOL



Our Junior Class preparing the garden beds for some seedlings to be planted - watch this space



Department of
Education

Shaping the future

Kindergarten enrolments are now open for 2025

If your child will be **4 years old**
by **30 June 2025**, enrol them in
Kindergarten now.

Come and visit us at Calingiri Primary School to get
your enrolment pack.

Find out more:
education.wa.edu.au/enrol





Shire of Victoria Plains

2024 – 2025 BUDGET ROADSHOW

PRESENTATION

Please come along and join Sean Fletcher, Chief Executive Officer and Colin Ashe, Deputy Chief Executive Officer at the below locations for a presentation on the Shires 24-25 Annual Budget. We will provide an opportunity for Q&A regarding the budget 24-25 and also provide residents with an informative insight into the Shire's Strategic direction over the next 2 - 3 years.

10:30 AM ON THE 27TH OF AUGUST – YERECOA TENNIS CLUB, YERECOA SE ROAD, YERECOA

3:00 PM ON THE 29TH OF AUGUST – PIAWANING HALL, DENTON ST, PIAWANING



CONTACT US :
reception@tweak.health
0405 989 107

TWEAK.HEALTH WONGAN HILLS PHYSIO



Physiotherapy, Dry Needling, Workers Compensation
Hands-On Treatment, Mobility Exercise Class

Our skilled physiotherapists treat a wide range of conditions, including:

- Headaches, Jaw pain
- Sports injuries, Pre & Post Surgery
- Spinal issues, Back pain, Knee pain
- Women's Health

Yes
2 days a week!

When: Wednesdays and Fridays *subject to change, please call to check

Where: Wongan Hills Medical Centre

35-37 Mitchell Street Wongan Hills WA 6603



BOOK NOW





Bolgart Primary School

Jump Rope for Heart

Our "Jump Off Day" was held on Thursday the 6th of June. Our students were able to show off the skills they've learnt, have fun and be acknowledged for their fundraising efforts. As a school we raised a total of \$870! What a fantastic Achievement.



Thank you to all of parents, carers and wider community that showed their support for the Lifesaving work of the Heart Foundation.



2024 **PIAWANING** **expo**

SATURDAY 7TH SEPTEMBER

FIREWORKS

WALTER WHIP & THE FLAMES

TRACTOR PULL

LAWN MOWER RACING

LIVE MUSIC

FREE KIDS ACTIVITIES

TRADE EXHIBITORS

STALLS & FOOD TRUCKS

SILENT AUCTION

VINTAGE SHOW & SHINE

FREE CAMPING

ATM & BAR ONSITE

TICKETS - Online or at the Gate

PIAWANING OVAL - GATES OPEN 10AM



piawaningexpo.com.au





A Comedy Science Adventure for All Ages!
Join us for free as we explore Energy, Earth and
Space at Bolgart and Mogumber Libraries on
Friday 4th of October 2024

Mogumber Library - 10am - Boundless Energy Show - find out about energy with fabulous games involving light, sound, rainbows, exploding chemicals, blast off with gravity and more.

Bolgart Library - 1:30pm - Earth and Space Show - Unlock the mysteries of our earth and weather. Make a tornado, a cloud, blast into space with rockets and lots more.

Bolgart Library - 2:45pm - High Energy Show - Discover many of the amazing secrets of heat, electricity, very strong magnets, singing tubes and explosive energy.

RSVP by 2nd October to Bridget on 9628 7004 or
bridget.moore@victoriaplains.wa.gov.au

This event is hosted by the Shire of Victoria Plains and is proudly funded by the LBW Trust (Learning For A Better World) and Friends of the Libraries Australia

FRIENDS OF
LIBRARIES
AUSTRALIA



LBW TRUST
LEARNING
FOR A BETTER WORLD



YERECOIN TRADERS

Little Country Store & Café

38 Miling Rd,
Yerecoin WA 6571

(08) 9654 6015

Open Monday - Friday: 7am-5pm Saturday: 8am-12pm



The best food and coffee in town!

Coffee • Lunch • Catering • Meals2Go • Venue hire
Our famous Saturday breakfast • Fully licensed
YT App • And much more!

Fancy a \$10 store voucher?

Sign up here!



@yerecointraders Yerecoin Traders yerecointraders.com.au