



Contact Us

T 08 9628 7004 | M 0429 651 101 | E reception@victoriaplains.wa.gov.au
28 Cavell Street, Calingiri WA 6569 www.victoriaplains.wa.gov.au



2025–2026 Budget Adoption

The Shire of Victoria Plains Council has formally adopted the 2025–2026 Annual Budget, delivering a strategically aligned financial plan that supports the community's long-term priorities.

The budget maintains a strong focus on investment in infrastructure, housing, and essential services across the Shire's four strategic pillars—Community, Economy, Environment, and Civic Leadership. It includes a \$12.9 million capital works program ensuring tangible benefits across the district. Significant grant funding has been secured for key projects, including \$4.57 million for the Housing Support Program, and \$3.25 million for the Regional Roads Safety Program. Continued engagement with Progress Associations and Community Groups will deliver on community priorities, strengthen infrastructure, and enhance the quality of life for residents.

"The budget also reflects prudent financial management, with adjustments to rates and fees in line with the Local Government Cost Index and a focus on long-term sustainability. On behalf of Council, I thank our Shire CEO, Deputy CEO and Manager of Works & Services, who together with their Teams, have invested heartfelt dedication and collaboration into delivering a well-structured and community-focused 2025–2026 Annual Budget.

The Energy Transition

In the first week of August, I attended the RE-Alliance Regional Leaders Summit in Newcastle with our Chief Executive Officer Sean, representing WA in discussions on the future of renewable energy development across Australia. The summit brought together local government and community leaders to exchange insights and practical strategies for managing the energy transition.

Our attendance was funded by Powering WA who sits within Energy Policy WA an agency of the Department of Energy and Economic Diversification, established to coordinate the delivery of the new electricity infrastructure needed to decarbonise the State's main electricity grid.

The Federal & State Governments have made their commitments to reduce emissions and reach net zero by 2050.

Victoria Plains is one of the several shires who sit alongside the State's major electricity grid and we are preparing for significant renewable energy projects in the future.

The summit reinforced the need for proactive, well-resourced engagement in the development process. Lessons from other councils emphasised that early planning for infrastructure, accommodation, workforce training, and economic diversification can help maximise community benefits and reduce project impacts.

There is a need to capture both the immediate and long-term advantages of renewable energy investment while safeguarding community interests. In a few years' time when wind turbines and transmission lines are a part of our area, the community needs to feel they have benefited from hosting the state's energy needs.

The timing of the summit was helpful, as the State Government seeks our submissions on their draft community benefits guidelines for renewable energy development. Council is meeting on the 13th August to finalise our submission to both Powering WA and the West Australian Local Government Association.



Hello from the CEO

I know we keep saying this each month, but it's hard to believe we are now in August! From a Shire perspective this means that the 25/26 Budget has been adopted, we have closed out the Corporate Business Plan for 24/25 and Council has endorsed the key actions for 25/26. The updates regarding these two matters can be found over the next couple of pages.

I have also included a four page spread on the Energy Transition (renewable energy) and where the Shire of Victoria Plains fits within the State's Plan and the Commonwealth's legal obligation to meet the requirements of the Paris Agreement regarding Climate Change and reducing green house gases.



Local Government Elections

The upcoming local government elections are an opportunity for passionate, community-minded individuals to step forward and help shape the future of the Shire of Victoria Plains. Council members play a vital role in leading, engaging, and making decisions that leave a lasting impact on our lives and communities. Being a councillor is about giving back to our communities, leading with purpose, and working together to achieve meaningful outcomes that provide the space for us to grow.

Local government is where communities come together to plan for the future, from infrastructure and services to sustainability and economic development. Councillors are at the heart of this process, ensuring that community voices are heard and reflected in every decision. Local government is where real change happens.

Being a councillor is more than a position – it's a commitment to lead with integrity, engage with purpose, and give back to the community that you call home. Supported by a professional administration focused on good governance, councillors are empowered to make informed, transparent decisions that reflect the values, needs and aspirations of our people.

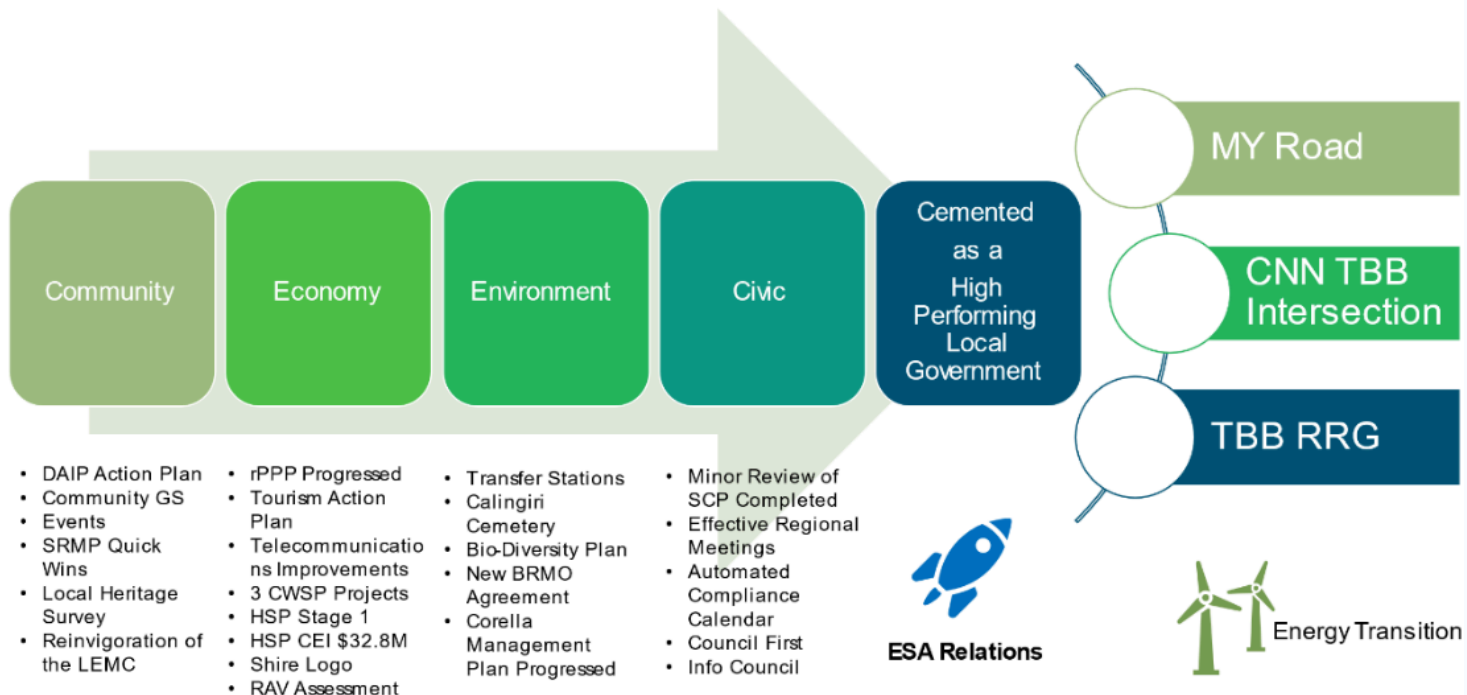
Whether you're passionate about protecting our environment, improving community facilities, supporting local businesses and our tourism industry, or simply want to be a voice for your neighbours – council needs people like you.

With diverse perspectives and shared commitment, we can build a stronger, more vibrant region. Whether you're a long-time resident or new to the area, your insights and leadership can help guide our future as a community.

The Shire is encouraging people from all walks of life to consider nominating. Diversity in backgrounds, experiences and perspectives leads to better decision-making and a stronger, more representative council.

Nominations open on 28 August 2025 and close at 4pm on 4 September 2025. For more information on how to nominate, visit www.elections.wa.gov.au/candidates-and-parties/local-government-candidates

Our Key Achievements 24/25



Shire's Direction 25/26



Community



- ☐ 1.1 Disability Access Inclusion
- ☐ 1.1 Aged Friendly Plan
- ☐ 1.1 Local Health Plan
- ☐ 1.2 Community Grant Scheme
- ☐ 1.3 SRMP-Trails, Weighting Criteria
- ☒ 1.3 Calingiri War Memorial
- ☐ 1.4 Upgrade of ES Building
- ☒ 1.4 Disaster Ready Fund R3

**AGRN
962**

\$4.6M

Economy



- ☐ 2.1 Regional Precinct Plan
- ☐ 2.1 Progress Marketing
- ☐ 2.1 Continue Water Projects
- ☐ 2.2 HRVA – Mogumber, Yerecoin
- ☒ 2.2 Regional Road Safety Prog
- ☒ 2.2 WSN = CNN Road
- ☒ 2.2 R2R = Yerecoin SE Rd
- ☒ 2.2 Plant & Equip Replacement
- ☐ 2.3 Roll Out Tourism Plan
- ☐ 2.3 Finish Signage Plan



Environment



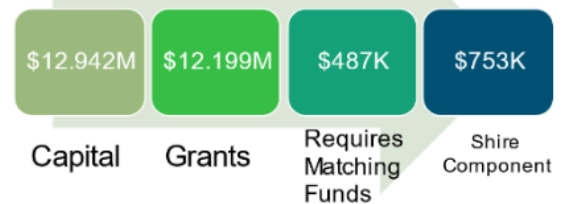
- ☐ 3.1 Community Waste W/S
- ☐ 3.1 Mogumber Transfer Station
- ☒ 3.1 Regional Waste Facility
- ☐ 3.1 Landfill Attendant
- ☐ 3.1 Finish Cemeteries
- ☐ 3.2 Bio-diversity Plan
- ☐ 3.2 MAF Program
- ☐ 3.2 Corella Management
- ☐ 3.2 Water Strategy
- ☐ 3.2 STED Program

Civic



- ☐ 4.1 Strategic Plan & WFP
- ☐ 4.1 Regional Meetings Advocacy
- ☐ 4.3 Compliance LL RRP RKP
- ☐ 4.3 Final LG Act Changes
- ☐ 4.3 Asset Management Strategy
- ☐ 4.3 AI Policy & Strategy, Cyber

Capital Program



Hello Residents and Ratepayers

July is always a busy time for the team and me as we finalise the 2024-25 financial statements in preparation for audit and formulate the budget 2025-26 for council adoption, this year being no exception.

We are getting more familiar with the new computer system noting whilst there is significant preparation in Rates modelling etc, the bulk run of actually raising rates only gets processed once a year and so it takes time to get accustomed with it, do the quality assurance and iron out any anomalies we find.

As always it's a little stressful to ensure we get the rate notices out as there are strict timelines we need to adhere to but as always, the team pitched in and the overall process ran relatively smoothly.

Rates 2025 -2026

Council adopted the budget on the 30 July 2025 at the Ordinary Council Meeting and resolved to increase rates by 7% for 2025-26. Council was advised on the major driver of the rate increase, this being the Local Government Cost Index (LGCI) prepared independently by WALGA. This is a measure of inflationary costs, similar to CPI but utilising more relevant types of costs incurred by local government with the LGCI forecast as 3.3% for 2025-26. Anything less than 3.3% would mean the shire would be going backwards as cost increases would exceed revenue increases. The net increase allows the shire to continue the momentum it has gained over the last three (3) years of improvements.

Unimproved Valuations (calculated by the Valuer General) increased on average by 15.5% across the shire (Gross Rental Valuations revalued every 5 years). The methodology when setting rates is to discount the rate in the dollar downwards to generate 2024-25 rate revenue and then apply the 7% increase. Rates are set for the whole of the shire based on its need so individually some rates will go higher than 7% others will be less depending on their UV and GRV valuation changes.

Rate instalments are offered and if any ratepayer experiences difficulty in paying their rates, the shire does have a hardship policy of which ad hoc payment plans can be entered into confidentially.

Budget 2025 -2026

The budget for 2025-26 will run a deficit and this is due to some unforeseen legacy costs that needed to be incurred in 2024-25 to complete projects and a reduction in revenue that included:

- \$1.2m over two years to complete the Calingiri – New Norcia Road Intersection with external funding of only \$669,000 to date.
- Unsuccessful in Flood Damage grant funding of \$818,000.
- Reduction in budgeted Grants Commission Funding of over \$300,000

The management team will risk manage this deficit in the financial year with a plan to return to surplus in the 2026-27 budget year.

Considering this 2024-25 outcome, the shire has still budgeted for a major capital works program in excess of almost \$13m for the 2025-26 as follows:

Financial Outcomes 2024–2025

For the 2024–25 financial year the shire expended \$5,242,668 in capital works including:

| Activity | (\$) | Status |
|---|----------|-----------------------------------|
| Admin Office Carpark and Walkway | 36,090 | completed |
| Edmond St Development | 40,165 | In progress carried forward 25-26 |
| Staff Housing fencing | 10,670 | completed |
| Mogumber Hall Locks and exits | 10,000 | completed |
| Single Axle Trailer set up Pump x2 | 39,900 | completed |
| Kubota Track Loader | 184,450 | completed |
| Hino 9T Tip Truck | 286,551 | completed |
| Hino 300 Series 617 Service Truck | 162,045 | completed |
| Howard Porter DFD45R Drop Deck Trailer | 41,645 | completed |
| Bobcat Trailer Single Axle Semi | 46,000 | completed |
| Depot Utility | 62,372 | completed |
| Tandem Dolly | 35,364 | completed |
| Depot Wash Down Bay | 9,053 | completed |
| Fogger | 5,770 | completed |
| Back Up Generators | 7,980 | completed |
| Hockey Goals | 6,800 | completed |
| Netball Scoreboard | 4,460 | completed |
| Toodyay-Bindi Bindi Rd Shoulder Binding | 121,000 | completed |
| Gouge Rd - Clearing Vegetation | 83,980 | completed |
| Calingiri N-Norcia Rd - reconstruction | 163,810 | In progress carried forward 25-26 |
| Calingiri – N-Norcia Road Intersection | 705,702 | completed |
| Toodyay - Bindi Bindi Rd Nth | 774,462 | completed |
| Mogumber-Yarawindah Rd | 1,465,79 | completed |
| Cemetery Shelter - Calingiri | 17,000 | In progress carried forward 25-26 |
| Waste Sorting Facility | 135,622 | completed |
| Bolgart Refuse Site Monitoring Bore | 25,204 | completed |
| Calingiri Sportsground Lighting | 62,969 | In progress carried forward 25-26 |
| Calingiri Youth Park | 9,850 | In progress carried forward 25-26 |
| Mogumber Cricket Pitch | 17,933 | completed |
| EV Charging Stations | 11,852 | completed |
| Footpaths | 60,318 | completed |
| Bolgart Caravan Park Bollards | 6,946 | completed |
| Water Tank Upgrade-Goudge / Parker Rd | 104,305 | completed |
| Bore Development - Goudge / Parker Rd | 121,144 | In progress carried forward 25-26 |

Administration

In accordance with Shire Policy of internal promotion and local workforce where possible I am pleased to advise the following changes in staffing roles:

Naomi Auhl – Rates Officer

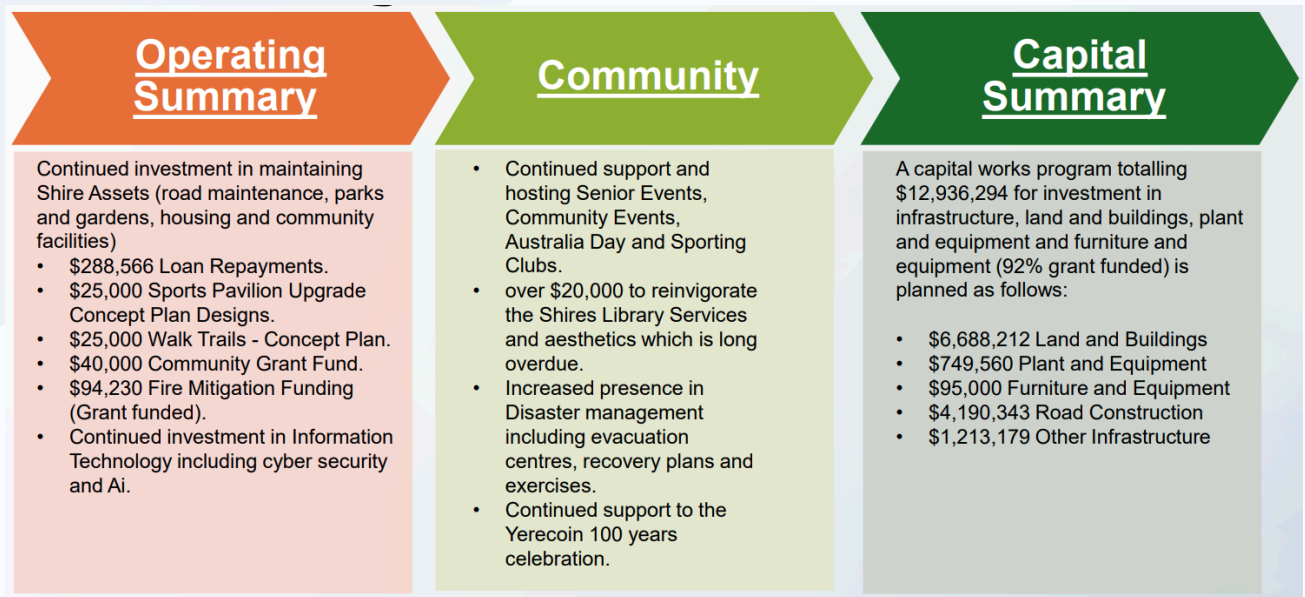
Katrina Humphries – Creditors Officer / Customer Service Liaison

Bridget Ralph – Community Development Officer

And welcoming Elizabeth Neczypir as the shires new Customer Service Officer.

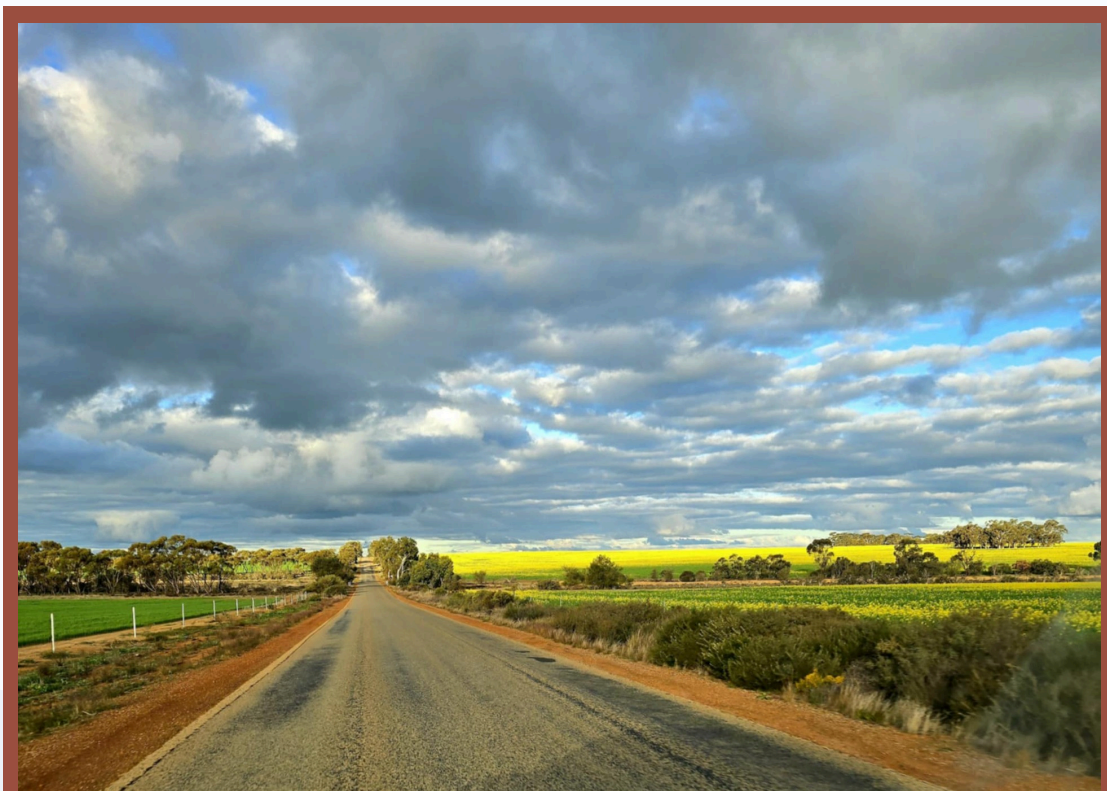
Most of these staff members have been with the Shire for 2–3 years providing stability to the workforce now, and hopefully for the longer term as proven performers so this promotion is well deserved.

2026 Budget at a glance...



Highlighted by:

- \$4,594,000 on the Housing Support Program (Edmonds Street Calingiri Redevelopment)
- \$1,890,000 Victoria Plains Precinct Planning.
- \$749,560 Plant Replacement Program.
- \$2,428,855 Toodyay – Bindi Bindi Road.
- \$823,540 Wongan Hills – Waddington Road.
- \$700,000 Yerecoin South Road.
- \$106,621 on Recreational Development Projects.
- \$180,000 Disaster Ready Projects
- \$308,833 Water Strategy Projects
- \$689,485 ESA Tourism Development (subject to grant funding)



Over the past month, we've been fortunate to receive some much-needed rainfall across the region. However, as a result, there have been temporary closures of various unsealed roads. While we understand that these closures can be inconvenient—especially for those of us who rely on heavy vehicle access for business operations—they are implemented for an important reason: to protect and preserve the long-term integrity of our road network for all users.

It's important to note that, although some sections of road may appear passable or drivable in your local area, this does not automatically mean the entire road is safe or open for travel. Opening a road based on partial conditions can lead to confusion and unintended consequences—such as drivers reaching a midway point only to encounter an impassable or closed-off section, forcing them to turn back. This not only wastes time but can also lead to further degradation of the road surface.

Another key factor in road closure decisions is the expected frequency of use. While it may seem harmless for one or two vehicles to pass through a damp or soft section, the reality is that once a few drivers begin using the road, others are likely to follow. This multiplying effect can result in rapid deterioration, creating ruts, erosion, and ultimately making the road unsafe and unusable for everyone. Preventing this kind of damage is far more cost-effective than extensive rework or full road reconstruction later on.

To help everyone stay informed, we encourage you to contact Reception and make sure you're included in the local road notification text group. This will ensure you receive timely updates regarding closures, re-openings, and other relevant road access information.

I'd like to extend a sincere thank you to everyone who respects these closures and contributes to the care of our road infrastructure. Your cooperation helps to extend the usable life of our roads and reduces the need for expensive repairs—benefiting the whole community in the long run.

Thank you again for your understanding and continued support.





As I have been given the opportunity within the Shire to transition out of my role as the Community Development Officer and into Finance, I wanted to take a moment to sincerely thank each and every one of you for your time, dedication, and unwavering commitment to our Shire.

Over the past three years, it has been an absolute privilege to work alongside so many passionate individuals and community groups. Your countless volunteer hours, creative ideas, and genuine care for your towns and neighbours have made a lasting impact—not just on our projects and events, but on me personally. I've truly enjoyed getting to know you all and being a part of your initiatives to help build stronger, more connected communities.

While I am stepping into a new role within the Shire as the Creditors Officer and overseer of Customer Service and the Front Counter, I want you to know that I will still be here—and always happy to assist if you need anything.

I am also pleased to introduce my colleague, Bridget Ralph, who will be stepping into the Community Development Officer role. Please bear with Bridget as she learns the ins and outs of this role and finds her feet.

She can be reached at bridget.ralph@victoriaplains.wa.gov.au or by phoning the Shire office on (08) 9628 7004.

Thank you once again for your support and collaboration. I wish you all the very best in your future endeavours and look forward to seeing the incredible work you will all continue to do across our wonderful Shire.

Jally Entertainment

On the 31st of July, we had the pleasure of hosting Jally Entertainment and their theatrical performance of Aladdin & his Magic Smartwatch at the Piawaning Hall.

This was a great evening and there was lots of laughter from all ages to be heard. Jally Entertainment put on a great show that was very interacting making sure they included the audience and inviting some of the children on stage to join in. Thank you to those that attended and were able to be a part of the evening.



The Shire's Emergency Management Team has been preparing for the upcoming bushfire season. Training has been held, fire trucks serviced and much more. Now is also the time for you to start preparing for the pending bushfire season. you will have recently received your rates notice containing the Shire's Section 33. Fire break notices.

Firebreaks

Now is a good time to get a head start on your firebreaks. The Section 33. Fire Break Notice on pink paper contained within your rates outlines legal requirements for firebreaks on your property. Ensure your properties are ready before October 1st. Failure to meet the requirements outlined within the Section 33. can result in penalties up to \$5,000.

Be sure to double check if your property fits in the 4000 and under square metre category, or the 4001 and above square metre category as they have different requirements.

The notice also contains a fire safety booklet, this contains some further best practices on fire breaks alongside useful information on a number of topics such as Total Fire Bans, Harvest Vehicle Movement Bans, Fire control Officer contacts, burning periods and guidelines for our farm response units.

Further information can be found on the Shires Website under Emergency Management.

BFB Training

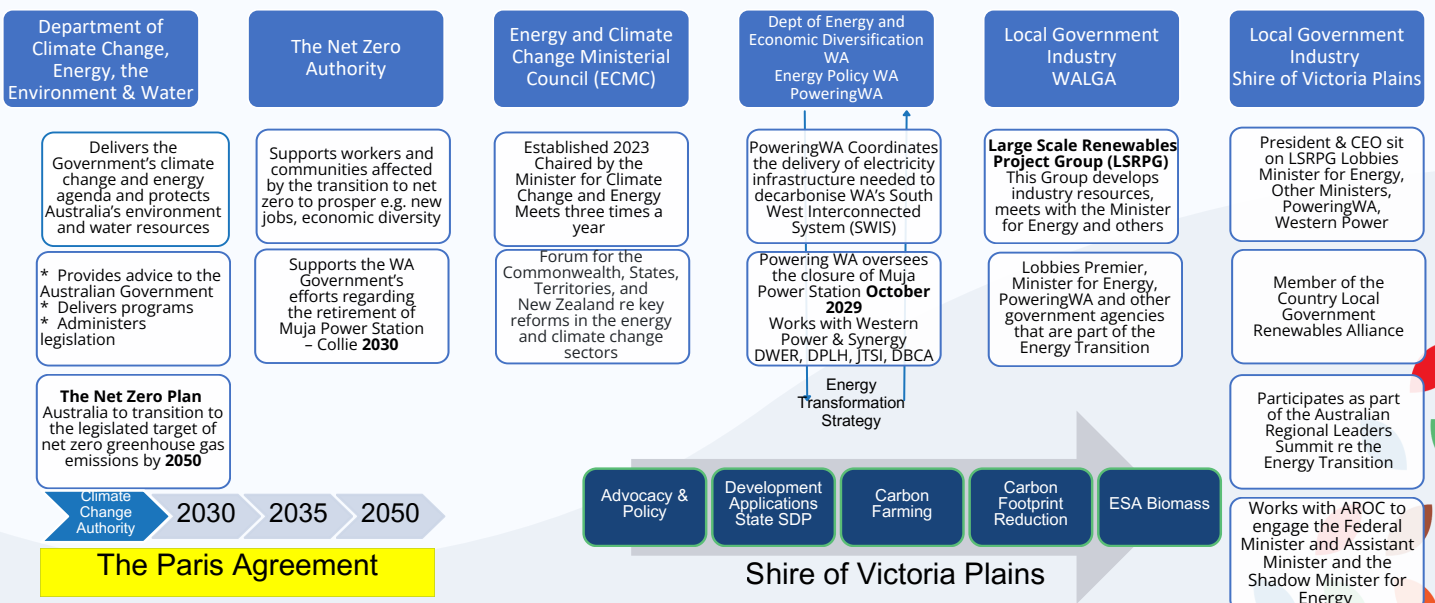
On the 4th & 5th August the Emergency Management Team hosted volunteers from Bolgart BFB, Yerecoin BFB and Ballidu VFES to complete Bushfire Safety Awareness and Fire Fighting Skills Training. These are the 2 courses which form part of the Shire's minimum training to attend fires in the Shire fire appliances. Participants covered a wide range of topics including safety around bushfires, communications, map reading, fire extinguishers and how to use all the different tools carried on the fire trucks.



The Energy Transition

CEO, Sean Fletcher 28/07/25

The Energy Transition = 2050 Net Zero



Community Benefits

Advocating for a Uniform, Fixed-Rate Community Benefit Contribution Framework for Renewable Energy Projects

The Shire of Victoria Plains strongly advocates for the adoption of a uniform, fixed-rate per megawatt (\$/MW) formula for determining community benefit contributions associated with wind energy, solar array, and battery energy storage system (BESS) developments across Western Australia.

In contrast to a variable or range-based contribution model—where proponents negotiate individual outcomes with host local governments—the fixed-rate model provides clarity, fairness, transparency, and consistency. A mandated contribution rate would significantly reduce the uncertainty and risks inherent in the current approach proposed under the State's draft guidelines.

The proposed range-based model creates a situation where local governments and their representatives are placed under unreasonable and unsustainable sovereign and political risk. This risk arises from the perception—often shaped during local election cycles or executive reviews—that a council's mayor, president, CEO, or negotiating officers have either failed to secure a 'sufficient' contribution or have been outperformed by other jurisdictions. This dynamic fosters:

- Public mistrust, especially in communities that may compare outcomes across local governments;
- Accusations of incompetence or, worse, corruption, where negotiations fall short of the upper end of the State's recommended range;
- Undue pressure on elected members and executives, which can erode public confidence and destabilise local governance;
- Political weaponisation of contribution outcomes during biennial local government elections, CEO contract renewals, or changes in council leadership.

This is particularly fraught given that local governments are often negotiating with multinational corporations possessing vastly greater resources, legal capacity, and experience. The expectation that volunteer elected members or even seasoned CEOs can reliably extract top-tier contributions within a range framework is not only unrealistic—it is systemically inequitable and unsustainable.

In contrast, a statewide fixed-rate formula, as already implemented successfully in jurisdictions such as New South Wales, provides a level playing field. It ensures:

- Predictability for proponents, streamlining project feasibility and budgeting;
- Certainty and consistency for local governments, avoiding reputational damage from perceived negotiation shortcomings;
- Transparency and fairness for communities, who are assured of equitable treatment regardless of where they live;
- Reduced risk of conflict or regulatory scrutiny, as contribution expectations are clearly established in policy and uniformly applied.

Unless there are extraordinary or site-specific extenuating circumstances, the use of a fixed rate per MW is a superior model—one that mitigates sovereign and political risk, fosters public trust, and enhances the integrity of renewable energy planning and delivery in WA.

Accordingly, we strongly recommend that the WA State Government adopt a consistent, mandated community benefits rate, aligned with the proven New South Wales model, and resist the implementation of loosely defined or negotiable contribution ranges.

Northern Link – Malaga to Three Springs



The State Government has issued contracts totalling \$342 million as part of the Western Australia's clean energy transition and phased coal exit by 2030.

The investment enables major upgrades to the northern section of the South West Interconnected System (SWIS), the electricity distribution network servicing WA from Geraldton to Albany and east to Kalgoorlie.

The contracts are part of a \$584 million State Budget commitment for Western Power to undertake network upgrades and expansion as part of the Clean Energy Link - North program.

The current Government has now invested \$1.6 billion in the State's electricity network expansion.

Clean Energy Link - North includes high-capacity transmission lines, terminals, substations, and transformers installed to unlock the flow of clean energy in the regions north of Perth.

The upgrade runs from Western Power's Northern Terminal in Malaga to Three Springs.

These contracts will deliver a 26.5km overhead 132kV transmission line from Wangara to Neerabup Terminal, new 132kV and 330kV terminals and line within the existing network, including existing line conversions and upgrades.

The work also includes the design and construction of new bays and associated lines at Regans Ford, construction of a new terminal at Three Springs and upgrading the existing transmission network in and around the Northern, Neerabup and Eneabba Terminals.

Clean Energy Link - North will make around 400MW of existing wind and another 1GW of new renewable energy available to customers across the SWIS and allow for more clean energy generation in the Mid West.

1GW of energy is enough to power around 500,000 homes.

This increased capacity is more than the output from the two largest State-owned coal-fired power stations (Muja D and Collie) – of just under 750MW combined.



PUBLIC SUBMISSIONS ARE NEEDED

Be Part Of The Conversation with PoweringWA

The Shire of Victoria Plains is committed to maximising outcomes for our local communities as we transition to a renewable energy future, and we encourage you to be part of the conversation.

The WA Government is calling for feedback from local communities, landholders, local governments, potential and current renewable energy developers and all Western Australians with an interest in the energy transition

Send your feedback on the proposals in the Community Benefits Guideline Consultation Paper **before 5:00pm (AWST), 18 August 2025.**

Your responses can be emailed to poweringwa@deed.wa.gov.au, or mailed to PoweringWA, Department of Energy and Economic Diversification, Locked Bag 100, East Perth WA 6892.



Community Benefits
Guideline for renewable
energy projects

Join the Wheatbelt's Renewable Energy Supply Chain

The Wheatbelt is experiencing a surge in renewable energy projects, including wind, solar, and carbon farming.

These developments offer local businesses opportunities to engage in the clean energy transition and benefit from regional investment.

Supporting local business participation

To support local participation, the Wheatbelt Development Commission is working with developers to maximize local procurement by:

1. Promoting the capability of Wheatbelt businesses to

developers

2. Registering and sharing emerging procurement opportunities

3. Assisting businesses to access support, meet requirements, and prepare for tenders

We welcome inquiries from businesses interested in joining current and future renewable energy supply chains.

For more information

Emma Everett

Regional Development Officer (Local Content)

☎ 0487 427 279

🌐 wheatbelt.wa.gov.au | dpird.wa.gov.au

✉ emma.everett@wheatbelt.wa.gov.au

Supported by the Department of Primary Industries and Regional Development

Business Opportunities

1. Accommodation, cleaning and maintenance services
2. Catering and food services
3. Concrete supply and operations
4. Fencing and gate installation
5. Freight and logistics
6. Fuel supply
7. Plant and equipment hire
8. Plant operators and drivers
9. Quarry products and transport
10. Septic and waste services
11. Site welding
12. Steel supply and fabrication
13. Temporary building hire
14. Water supply and bore drilling

This list is indicative only. Businesses of all types are encouraged to register their interest.

What is the procurement process?

It varies between developers, with opportunities in direct supply, tender, and subcontracting. Our Local Content team works with developers to identify key requirements (e.g., ISO certifications, WHS policies, insurances) and connects businesses with resources to help them prepare.

Can someone interested in direct employment get involved?

Yes! Contact us for guidance on connecting with direct employment opportunities. We're collaborating with local employment and training services to help candidates prepare and apply.

YERECOAIN PRIMARY SCHOOL



EAGLES CUP

Yerecoin, Bolgart and Calingiri Primary Schools met for the Eagles Cup Football and Netball competition. Students learnt many skills. A big thank you to our many helpers.



On Wednesday the 3rd of July at Yerecoin Primary School, the Carnaby Crusaders came to our school.

The person that came to show us the live cockatoos was called Dean. He brought two cockatoos; one was Mr White and he was a Carnaby. The other was Jedda and he was a Red-tail Carnaby Cockatoo.

There are three types of Carnaby Cockatoos: the Carnaby, the Red-tail and the Baudin which are all cockatoos.

You can tell a Carnaby and a Baudin apart because Baudin's have a longer beak while a Carnaby's beak meets together.

Red-tails and Baudins live in the South West forest area while Carnaby's live on the Swan Coastal Plain. Carnaby's have the largest distribution of the three species. The three species all live for 30-50 years.

FUN FACT: The oldest recorded Carnaby was 72 years old, WOW!

By Eilidh - Year6

VPSSA CROSS COUNTRY 2025

Sacred Heart Primary School hosted the VPSSA Cross Country at the Goomalling Golf Club this year. Congratulations to the following students:

Girls PP: Ksenija 2nd, Niamh 9th

Girls Yr 1 & 2: Emily 4th

Boys Yr 1 & 2: Taha 4th

Boys Yr 3 & 4: Rocco 4th, Adam 7th



JUMP ROPE FOR HEART

Congratulations to Emily for raising \$79 for Jump Rope for Heart.



SPARE PARTS PUPPET THEATRE : 'PILLOW FIGHT' and WORKSHOP



After watching an engaging show, students made marionette puppets in Art, on the last day of term two.

Thank you Spare Parts for this great workshop and also to the P&C for funding this.

BOLGART PRIMARY SCHOOL

Phone 96275 300

Email: Bolgart.PS@education.wa.edu.au



Senior Room News

The senior class have been busy. We enjoyed playing netball and football at the Eagle Cup in Calingiri. Cameron and Harley both received an award for their efforts.

In week 7 we went on our school camp. What an unforgettable camp it was.

In Digital Technology we are beginning to code using SCRATCH, an online program. So, when we come home asking to go on the computer for homework, we are telling the truth. Miss Woodhouse would like us to practice at home too.

Science experiments have been entertaining. The year 3/4 group have been conducting heat through different materials to melt butter and the year 5/6 group have been testing out the optimum distance for a light source at a puppet show.

We have also added a new spelling program 'Word Origins' where we are learning the meanings of morphemes to help us spell. So far it has been fun.

The class are now reading a Goosebumps book in class. It is rather creepy, and we are glad we read in the daytime.

Junior Room News

During Science the students in the Junior Room have been learning about movement, forces and variables such as friction. They have been exploring weaker and stronger pushes and pulls, various forces of air and how far toy cars travel on different surfaces. We have created ramps, rockets and bats and balls to help understand how these forces work!

Our unit on The 3 Billy Goats Gruff led us to recording some interesting facts about goats. Our favourites included that female and male goats both have beards and that goats hate the rain!

The Kindy and Pre-Primary children have two wet, scaly class pets! They are orange and white goldfish called Flippy and Floppy! We have enjoyed learning about them and caring for them.

COMMUNITY SCREENING JUST A FARMER

HOSTED BY:
KOORUNGA CWA
MOGUMBER OUTBACK CLUB

AUGUST
16TH
WANNAMAL HALL
FROM 6PM

LIGHT
DINNER &
SUPPER
INCLUDED

SCAN THE
QR CODE
FOR FREE
TICKETS

Just a Farmer isn't just a film — it's a heartfelt tribute to the real people who feed the nation, navigating mental health, family pressures, and the changing face of rural life. It's raw, honest, and deeply moving.



PROUDLY SUPPORTED BY:
CWA BINDOON BELLES
CHITTERING BINDOON CWA
WANNAMAL COMMUNITY CENTRE



raising awareness
of depression and
suicide prevention

The Treasure Trove
@ Gingin
Community Op Shop

For ticket inquiries contact
koorungacwa@gmail.com OR Felicity 0400505656



Department of
**Primary Industries and
Regional Development**

**Protect
Grow
Innovate**

Grow your business

Supplier contract to the
Western Australian Government

Regionally based businesses deliver economic benefits to WA through participation in government procurement. Consider the benefits to your business through supplying works, goods or services to the WA Government. Engage a Local Content Adviser in your region to find out more.



The Local Content Adviser Network

The impetus behind the formation of the Local Content Adviser Network was the WA Government's commitment to building and diversifying regional economies and creating jobs. The Network seeks to ensure businesses in regional WA receive a fair share of government expenditure on works, goods and services.



More information

To find out more send an email to local.content@wheatbelt.wa.gov.au



Or scan the code to learn about the Local Content Adviser Network.





YERECOIN

CELEBRATING 100 YEARS • 1925 - 2025

Yerecoin Centenary Celebration - A Weekend to Remember

Yerecoin is gearing up for its biggest celebration in 100 years, with a three-day centenary event from Friday 5th to Sunday 7th September. The weekend kicks off on Friday night with Yarns by the Fire at the golf club - a relaxed evening to share memories and stories from years gone by.

Saturday is the main event, with the Yerecoin Hall transformed into a showcase of local history. Enjoy historical displays, reconnect with old friends and family, and keep the kids entertained with fun activities throughout the day.

Then it's time to dust off your dancing shoes for Saturday night's Sip & Swing Party at the tennis club. Step back in time to the roaring 1920s and enjoy a glamorous evening of live music, substantial finger food, and dancing with a band and DJ.

The weekend wraps up on Sunday morning with a Recovery Breakfast back at the tennis club - the perfect chance to farewell old mates and reflect on a memorable celebration.



YARNS AROUND THE FIRE

5TH SEPTEMBER

A night of storytelling and Live Music at the Yerecoin Golf Club. Hot Beef rolls included in price drinks available to purchase. BYO Chair

EMAIL: YERECOINPROGRESS@OUTLOOK.COM

CAMPING DETAILS

Yerecoin Wayside Rest Area, must be booked via email for the centenary weekend.

Cost is \$25.00 per site per night with toilets and showers available, powered and non powered sites.



SIP AND SWING

FOOD, DRINKS & LIVE MUSIC

SATURDAY | 6TH SEPTEMBER | YERECOIN TENNIS COURT
1920'S THEMED ATTIRE ENCOURAGED

WE'RE BRINGING THE 20S TO THE 2020S!
THE YERECOIN PROGRESS PRESENTS
SIP & SWING YERECOIN 100 EVENING EVENT
PLEASE COME ALONG AND HELP US CELEBRATE YERECOIN TURNING 100.



JOIN US FOR BREAKFAST!

SUNDAY 7TH SEPTEMBER
8AM-12PM

YERECOIN TENNIS CLUB
TICKETED EVENT



**LOCAL GOVERNMENT ORDINARY ELECTION
CLOSE OF ENROLMENTS
Shire of Victoria Plains
ROLL CLOSE: 5:00 PM Friday, 22 August 2025**

You may be eligible to be enrolled to vote in the local government elections on 18 October 2025 if you live in or are an owner or occupier of rateable property in the Shire of Victoria Plains.

Residents

You are automatically enrolled to vote if you are on the State Electoral Roll as at 5:00 PM Friday, 22 August 2025. If you are not already on the State Electoral Roll and meet the eligibility criteria, or if you have changed address recently, you must complete an enrolment form.

Enrolment Forms

You can enrol or update your details online, or download an enrolment form, via the Western Australian Electoral Commission website (www.elections.wa.gov.au/enrol). Forms are also available from the Australian Electoral Commission (www.aec.gov.au). Enrolments and updates must be completed and received by 5:00 PM Friday, 22 August 2025.

Non-Resident Owners and Occupiers

If you are a non-resident owner or occupier of rateable property in the Shire of Victoria Plains and are on the State or Commonwealth Electoral Roll, you are eligible to enrol to vote. Owners of land who were on the last Local Government roll continue to retain that status until they cease to own the rateable property to which the enrolment relates. Occupiers do not have continuous enrolment and should contact the Shire of Victoria Plains to confirm their enrolment status. To be eligible to enrol as an occupier, you will need to have a right of continuous occupation under a lease, tenancy agreement or other legal instrument for at least the next three months following the date of the application to enrol and have paid rent for at least the prescribed amount.

Joint Owners and Occupiers

If a rateable property is owned or occupied by more than two people, a majority of the owners/occupiers may nominate two persons from amongst themselves who are on either the State or Commonwealth Electoral Roll, to enrol as owner/occupier electors.

Corporations

A body corporate that owns or occupies rateable property may nominate two people who are officers of the body corporate that are on either the State or Commonwealth Electoral Roll to enrol as owner/occupier electors.

Enrolment Forms – Non-Resident Owners and Occupiers Only

Enrolment forms can be obtained from local governments and must be lodged with the Chief Executive Officer by 5:00 PM Friday, 22 August 2025. Further information can be obtained from the Shire of Victoria Plains.

Friday, 1 August 2025

2025 Local Government Elections Candidate Information Webinar

Dear Governance Subscribers

WALGA, together with the Department of Local Government, Industry Regulation and Safety (LGIRS) and the WA Electoral Commission (WAEC), will be hosting a candidate information webinar ahead of nominations opening on 28 August.

The webinar will be held at **6:00pm on Monday, 18 August 2025**.

This session is designed to support individuals considering nominating, providing an overview of:

- Election processes
- Responsibilities of Local Government and Council Members
- Regulatory role of LGIRS

The following presenters will cover a range of topics, with the aim of preparing candidates for the electoral process, and if elected, life as a Council Member:

- Hon. Hannah Beazley MLA - Minister for Local Government; Disability Services; Volunteering; Youth; Gascoyne.
- Karen Chappel AM JP, President, WALGA.
- Dennis O'Reilly, Acting WA Electoral Commissioner & Phillip Richards, Manager of Election Events.
- Erin Gauntlett - LGIRS Deputy Director General
- Tony Brown, Executive Director Member Services, WALGA

Participants will have the opportunity to ask questions during the session.

Local Governments are encouraged to share details of the webinar through their networks and to host a group viewing for community members who may be interested in nominating.

The webinar will be recorded and will be made available following the event.



The Shire will be hosting a webinar in the Council Chambers for those interested in attending. To confirm your participation, kindly RSVP by emailing reception@victoriaplains.wa.gov.au or by calling 9628 7004

Harvester Set-Up Workshops



MEASURING HARVEST LOSS - HARVEST WEED SEED CONTROL - HARVEST FIRE PREVENTION

WEST REGION
SEPTEMBER 2025



Bolgart

Venue: 682 Calingiri/Goomaling Rd, Wyening
-31.141028, 116.518250

19th Sept
8:30am -
2:00pm
Lunch Provided

Grain growers and industry stakeholders are invited to participate in one of a series of 2025 GRDC Harvester Workshops to be held in the lead-up to harvest 2025.

Hear from industry experts and local growers on the integration of harvest weed seed control (HWSC) options, harvester fire prevention, accurate measurement/management of harvest losses and harvest storage.

The workshops hosted by Facey Group will bring together harvester specialists, industry experts and researchers to discuss preventable harvester grain losses and how to measure these, improvements in efficiency and output, methods of harvest weed seed control (HWSC), the prevention of harvester fires and calibrating harvester technology.

WORKSHOP LEADERS

Peter Broley (Primary Sales Australia)

Ben White (Kondinin Group)

Brett Aspher (Independent)

Kassie van der Westerhuizen (Harvest Specialist)

Peter Newman (Planfarm)

Murray Skayman (Harvest Specialist)

Alongside demonstrations by industry representatives and manufacturers.

PROGRAM

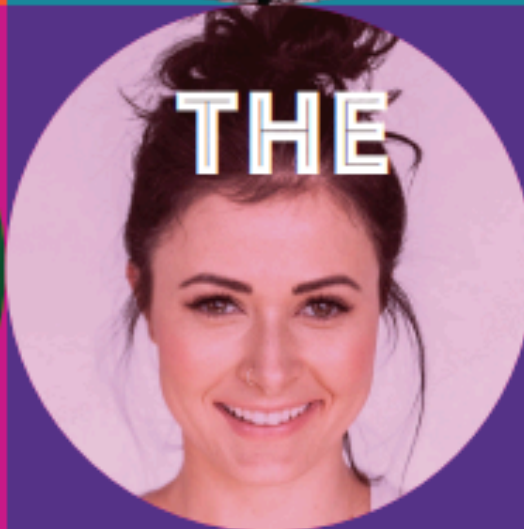
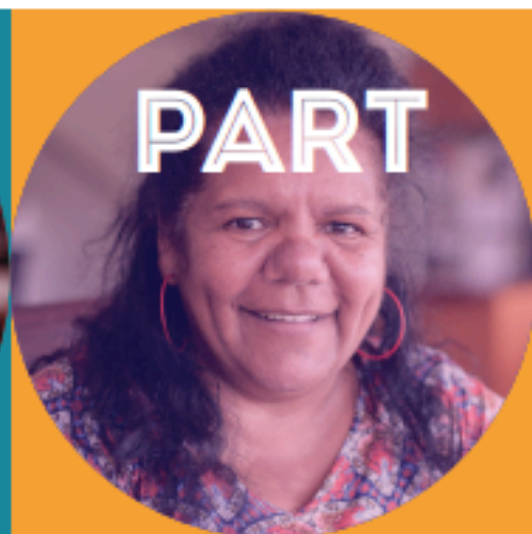
- Understanding the impact of harvest loss, how to measure it, how to change your harvester to reduce losses, grain storage.
- HWSC latest information, sharing how to set-up for effective HWSC using mills systems (iHSD, Seed Terminator, SCU) chaff decks & chaff lining.
- Reducing the risk of harvester fires.
- Improving harvester capacity and efficiency.
- Managing Harvest operations, productivity, and economics



Register Here

trybooking.com/DDVYJ





Presented by:



Australia Day
Council of
Western Australia

Principal Partner:



Government of Western Australia
Department of Communities

Media Partners:



WAtoday

News you need to know today

Nominate now

If you know someone, or a group, doing great things in our community, nominate them for a 2026 Community Citizen of the Year Award, in our four categories.

- > Citizen of the Year
- > Youth Citizen of the Year
- > Senior Citizen of the Year
- > Active Citizenship (Group or Event)

citizenshipawards.com.au | Closing Date: 31 October 2025

Local Government Recognising Community Champions.



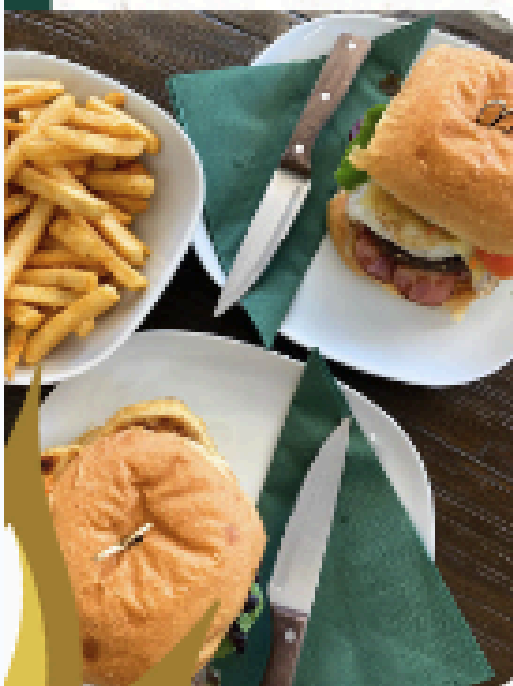
YERECOIN TRADERS

Little Country Store & Café

38 Miling Rd,
Yerecoin WA 6571

(08) 9654 6015

Open Monday - Friday: 7am-5pm Saturday: 8am-12pm



The best food and coffee in town!

Coffee • Lunch • Catering • Meals2Go • Venue hire
Our famous Saturday breakfast • Fully licensed
YT App • And much more!

Fancy a \$10 store voucher?

Sign up here!



© @yerecointraders

Facebook Yerecoin Traders

Website yerecointraders.com.au